



Lift Systems

PRODUCT CATALOGUE



English

Table of contents

| | | | |
|---------------------------------------------------------|--------------|------------------------------------------------|--------------|
| We are Villiger | 4 | Technical data | 46-47 |
| We listen to you | 5 | Details that count / Technician shaft | 48 |
| Sustainability | 6 | Type BAS 10 / Type BAS 20 / Type BAS 30 | 49 |
| Suurstoffi Rotkreuz ZG | 8 | Installation/project planning | 50-51 |
| A new kind of residential tower | 11 | Safety equipment | 52 |
| Optional extras / Organic and green waste collection | 12 | Emergency opening of the pavement platform | 53 |
| Quadromat in nursing homes and hospitals | 13 | Quadromat conversions | 54-55 |
| Feldbreite Emmen | 14 | Liftomat: Flexible modular system | 56 |
| Impressive cleanness | 17 | Liftomat: Components | 57 |
| Lucerne Allmend | 19 | Liftomat: | |
| Bound by tradition | 20 | Type designations and Planning bases | 58-60 |
| Dübendorf | 22-24 | Type examination certificate | 61 |
| Abu Dhabi | 25 | Concrete element | 62 |
| City of Lugano | 26-27 | Operation and hydraulics | 63 |
| Small town Lenzburg | 28 | Now even easier | 64 |
| Throw-in columns for all waste | 29 | Pavement Platforms | 65 |
| Ascona, historic old quarter | 30 | Closing frame | 66 |
| Bellinzona, railway station | 31 | One system, various options | 67 |
| St. Gallen | 32-34 | Textile collection | 68 |
| More than just a waste collection system | 35 | Throw-in columns | 69 |
| Norway | 36-37 | Reference projects | 70-71 |
| Quadromat: | | Lift systems: | |
| types and planning principles | 38 | maintenance and function check | 72 |
| Compactor container planning | 39 | Your team of experts | 73 |
| Platform surfaces | 40 | Service by professionals | 74 |
| Drainage / closing frame | 41 | Maintenance contract | 75 |
| Quadromat QMS 600-25: The new series | 42-43 | Customer service | 76 |
| Many options. One clear choice. | 44 | Continuous documentation / Spare parts | 77 |
| Quadromat: The only right choice | 45 | Why Villiger? | 78 |





For decades, the name Villiger has been synonymous with sophisticated and practical, high-quality solutions in the waste management industry. Entrepreneurship, a pioneering spirit and the joy of innovation characterise the present and future of the Villiger Group.

Villiger is one of the leading companies in waste management systems, spanning development to production and service. At its Swiss headquarters in Oberrüti, the company employs over 100 motivated professionals, plus over 140 employees at our partner company.

Furthermore, we place great emphasis on the professional development of numerous trainees every year. Each of them is an integral part of our company – for us, this is an important investment in the next generation.

Villiger is the only industry player that offers you all around solutions from a single source. The product range extends from conventional underground, semiunderground and aboveground containers and lift systems to the automated Speed-Waste-Lifter, which comprises a pickup device and mobile cleaning systems. Competent consulting, prompt service, expert repairing and a large spare parts warehouse complete the offering.

Our passion for modern waste management systems means embracing continuous advancement and always challenging the status quo. We place a very high value on research and development and are always looking for new, more efficient solutions in-line with our customers' needs to save disposal costs and reduce CO₂ emissions.

We listen to you.

The innovations, modifications and improvements that we make to products are often the result of feedback from customers. We have worked closely not only with managers in local communities, the waste management industry and many municipal authorities, but also with our experienced and professional sales partners to revamp and refine the Quadromat and Liftomat underground systems.

Top quality as standard

Villiger has another quality waste collection product on the market that has been performing particularly well in day-to-day service for years. This is reflected in the more than 100 Quadromat systems installed to date.

True values

Lift systems from Villiger are robust and long-lasting and retain their value extremely well. They satisfy the high requirements made of them and are characterised by versatility and economy. The Quadromat lift system from Villiger gives you long-term security of investment.

Safety first!

A passion for waste management systems means taking responsibility and offering products that meet all requirements as well as the very highest standards and expectations. Villiger guarantees certified safety and boasts both considerable experience as well as a broad spectrum of references.

Service - always and everywhere

The Villiger service package gives the customer confidence - worldwide, seven days a week. We provide rapid, no-fuss help, either directly or through our reliable sales partners. Downtimes are expensive, which is why Villiger makes sure its customers are sent spare parts quickly and reliably or given assistance by qualified service engineers.

You can enjoy the benefits of the proven Quadromat underground press lift system, which has never before existed in this form!

What makes it a giant

Underground compactor stations compress the recyclable material and residual waste that is deposited in them, significantly minimising the volume. As they are below ground, they do not have an adverse impact on the visual appearance of the area, nor do they take up any surface space. The only parts that are visible are the elegant throw-in columns with access system. What's more, very little odour is emitted, despite the large quantities. For emptying, the waste systems are raised by means of a hydraulic system.

An impressive solution

These days, how waste disposal is organised is of central importance for housing estates, public buildings and commercial properties. That's why such underground waste management systems are so popular for large apartment buildings and housing estates especially: they are attractive, save space, offer barrier-free access and ensure a clean living environment.

Since land is becoming ever more expensive, particularly in conurbations, and it would be a pity to take up valuable space with rubbish bins, more and more operators are opting for a Quadromat compactor station instead of a large number of bins.

Gigantic savings in fuel costs and CO₂ emissions

Compaction in the container increases capacity. To take an example from real life, a residential block of 400 people, with each person creating about 0.4 kg of residual waste a day, will produce a total of 58,400 kg of waste every year. It operates a QMK 650-31 with a compactor container of capacity 18–20 m³. This only has to be emptied every 50 days, corresponding to seven emptying operations a year.

Sustain- ability

Environmental compatibility, rising raw material costs and increasing quantities of waste are issues of central future relevance that we encounter every single day. The Quadromat system brings all these aspects together and offers lasting reductions in transport routes as well as huge CO₂ savings. It can also be integrated aesthetically into the surrounding area.

Quadromat underground collecting press

When you invest in a Quadromat from Villiger, you are choosing not only one of the best systems in the world, but also the elite team behind it. It's a team that provides reliable, first-class service and ensures that your Quadromat system can be used round the clock. But that's not all: you also get our "standard extras" for your new system. That's the unparalleled good reputation of Villiger. A company. A name. Since 1991!

May we present: the Quadromat

Our research and development expenditure on this new generation exceeds everything that we have ever previously invested in the development of a new product. We took your ideas and suggestions into account in every phase of development, using all our experience to create a product that is convincing down to the tiniest detail.

And let's not forget, either, that it has never cost less to dispose of waste cleanly and efficiently than with the Quadromat from Villiger!



**One system,
countless advantages**

Quadromat

Patent no. 10189099.4

Particularly low maintenance costs

The Quadromat lift system was designed for minimal maintenance and servicing. The Quadromat is built around a simple mechanical system and offers an unbeatably low level of maintenance expense. The comprehensive support from our customer service or many sales partners gives you professional certainty - at all times.

Don't just meet expectations - exceed them!

We are working constantly on ensuring that our systems always keep you one step ahead. That's why we're proud to present one of the best-value lift systems that is available on the market at present.



More than just a waste container!



Suurstoffi Building development in Rotkreuz

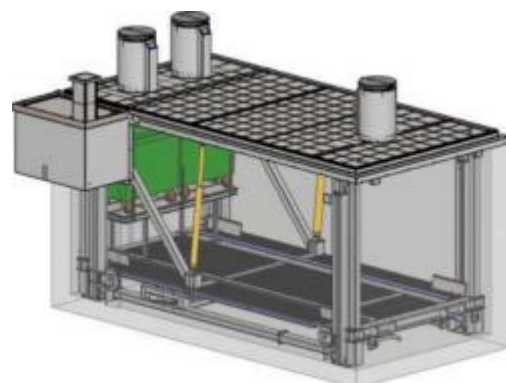
Waste disposal for more than 5,000 people

In recent years a whole new quarter with modern and impressive architectonic structures has grown up over the area of 100,000 m². It consists of a mix of housing, services and university campus and has a capacity of more than 5,000 people. The entire area is served by a primary energy concept of pioneering design. This is all combined with open space suitable for a variety of purposes, resulting in a vibrant quarter offering the widest range of uses. It was entirely fitting, then, that a decision was made in favour of a sustainable, low-emission waste disposal system. Just four underground compactor systems are perfectly adequate for the whole area with its different types of building and over 5,000 people.



Properly good waste collection

Throughout the area, a collection point is never more than a few steps away. A sophisticated concept means that only four Quadromat systems are sufficient for more than 5,000 people. The idea is based partly on the wishes and inputs of the inhabitants, who want to be able to dispose of their waste quickly but without having a waste container located right outside their front doors. Our solution meets all these needs and concerns!





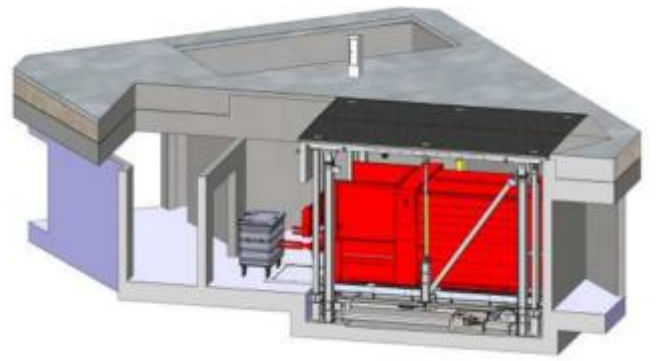
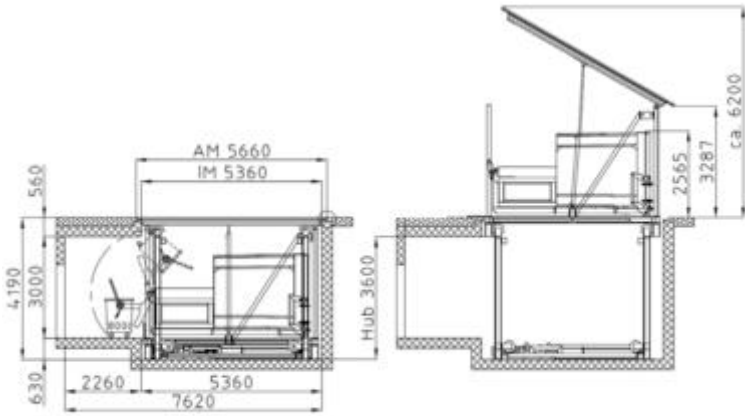
Pioneering waste disposal in Suurstoffi

Four Quadromats offering an unusual choice

The lift systems are configured with different options - you can see for yourself which meet the requirements in the quarter.







Optional extras in Suurstoffi

To ensure that the many possibilities and benefits of the Villiger Quadromats can be put to optimum use, we have a range of optional extras for you. These solutions will save you money and enhance convenience.



Residual waste disposal, Caslano type throw-in column with weighing



Organic and green waste collection

The lift system also includes a facility for collecting green waste. This consists of two throw-in columns with access system, each with a wheeled container under the platform.

Throw-in column with card scanner



Removal of the wheeled container from the platform. Integrated with a fill-level sensor.

Disposal hatch with container tipping device

Throw-in column with sack weighing, combined with a disposal hatch and sunken container tipper.

An integrated hydraulic tipper enables wheeled containers holding 700 to 800 litres to be emptied, with the waste being identified and weighed as well. The data are collected and analysed simultaneously.



Series QMK-AEK-10

Quadromat in nursing homes and hospitals



Acherhof district - historic Acher House

The Acherhof is located southeast of the Convent of St. Peter am Bach in Schwyz, right in the heart of an estate featuring a courtyard, garden and farm buildings. The Acherhof offers a very attractive concept with a new village district for all generations that includes a retirement home, rental apartments, day schools and the "Restaurant zum Acher". The entire waste produced in this area is handled by a single Quadromat system.

**You only
get the true
Swiss original
from us.**



In the heart of Switzerland

Feldbreite Emmen

Emmen in transition

Thanks to its excellent transport links in the heart of Switzerland, the municipality of Emmen can look back on a rich history as a coveted location for industry. Social changes and the transition from an industrial to a service-oriented society offer Emmen a unique opportunity to reposition itself as a residential community with affordable housing on the key transport axes in Switzerland. This transformation is in full swing, and the Feldbreite district is one of those affected.





Waste disposal with no negative aesthetic impact

The gently curving footpaths, planting with bushes and trees of the newly created Feldbreite park offer sheltered opportunities for relaxation, places to meet others and space for recreation. The underground Quadromat press system was chosen to handle the waste disposed of across the whole quarter. As the system is installed below ground level, there is no negative impact on the landscape.



**We deliver
more than
promised.**

A quarter which will have up to 900 homes when completed covers its entire waste disposal requirements with just four Quadromat systems.



What makes it a giant

With a collecting press of capacity 22 m³, the underground compactor station can hold around nine tons of waste, which will only have to be emptied every five weeks.

1 Integrated buffer container, 600 litres

Compactor container being removed directly in the lift system



Impressive cleanness

Hardly any paper left lying around

Underground collection points offer so much more - such as a better collection rate, tidiness, cleanness and continuous accessibility. This ultimately results in a better quality of life thanks to significantly reduced noise and odour emissions.



Two types of waste

With the Quadromat system, all residual waste is collected using a Caslano type throw-in column with an access system for authorised persons and integrated sack weighing. Bills on a 'user pays' basis are sent to the relevant users as a quarterly invoice.

Organic and green waste is collected using the LU 400 Liftomat with 770-litre wheeled containers, which are emptied weekly by the local collection service team. The Caslano type throw-in column has an access system for authorised persons. Each throw-in column is fitted with a fill-level sensor so that only one column is open at any time. Once the container is full, it switches to the next empty container.





Multifunctional lift system **Quadromat**

Disposal hatch with
integrated throw-in
column, side safety
guards and vehicle
barrier

Series
QMK-AE-10



Lucerne Allmend

Quadromat with multifunctional features

Lucerne has gained a new, ultramodern and architecturally impressive football stadium in the Allmend district. A Quadromat is located nearby, adjacent to a building complex containing homes and businesses.

Lucerne's waste management company has installed an underground Quadromat lift system next to the building, where the waste from the new complex can be disposed of. In addition, the public waste collected by the small refuse trucks can be tipped into the lift system.



A road sweeper being unloaded



Caslano type throw-in column with locking system



A transport trailer is tipped up. Series QMK-AE-10.

Bound by tradition

Quadromat system meets high sustainability targets

The insurer Zurich has its headquarters in a historic building on Mythenquai, on the west bank of the lake. The building has been extensively restored and also supplemented with an annexe kitted out with the latest features for the next hundred years. The group set itself high sustainability targets for the restoration and extension. In the annexe, for instance, a Quadromat lift system was installed to handle the waste produced within the building.



Disposal solutions within the building

The Quadromat lift system is the perfect solution for construction projects with confined spatial conditions. In this case a standard QMK 650-31 product was chosen, the only adjustment being a higher lift height.





Our solutions are characterised by ease of operation and high system reliability. We attach great importance to the integration of your individual wishes, and work together with you to develop appropriate solutions for inside and outside areas.



The lift platform can take the weight of trucks up to 40 tons.

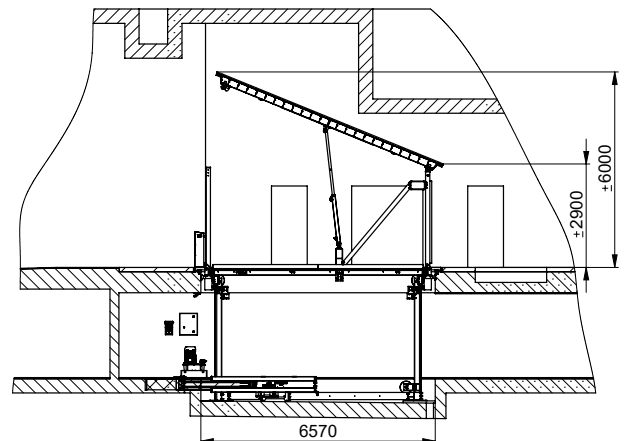
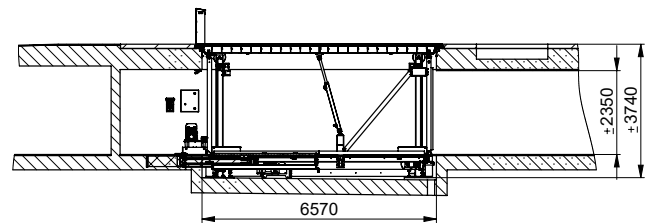


Raised lift for loading the compactor container.



Lift system with fencing on all sides.

- 1** Raised lift, view from the throw-in side
- 2** Compactor container in the lower floor for filling
- 3** Utility and disposal room with large entrance door





Dübendorf

Waste collection in changing times

The town of Dübendorf is constantly growing and developing. It has around 30,000 inhabitants, making it the fourth largest municipality in Zurich Canton. Dübendorf's location close to the financial and business metropolis of Zurich makes it a highly popular destination for commuters. This trend is having an impact on the larger residential developments, resulting in attractive housing options offering great comfort and convenience as well as many other benefits. With its systems, Villiger is supporting these amenities by providing the opportunity to dispose of waste at a variety of nearby locations using a Quadromat system.





**We are
Villiger:
simply pro-
fessional.**



Dübendorf

The cost-effective solution

The impressive tower blocks, modern and timeless architecture and rich and varied infrastructure ensure that the location is very popular.

This, though, results in greater quantities of waste that have to be disposed of all the time. There is no system better suited to meeting this requirement than the underground Quadromat compactor system.

Design and functionality of the very highest level

A Quadromat system adds a prestigious look and can be integrated directly into a residential complex, but is also always accessible. In many cases that makes it the only sensible solution for the professional handling of large quantities of waste.



Abu Dhabi

Waste collection in the city of superlatives

Abu Dhabi, the capital of the Emirate of Abu Dhabi and the United Arab Emirates, is located on an island 70 square kilometres in size in the Persian Gulf, in the mangrove belt. Some 1.5 million people live in the heart of the city. Villiger has installed a waste collection system for a large, new quarter featuring many offices and residential complexes: a Quadromat system located ergonomically in an underground car park.



Increase the attractiveness of your property

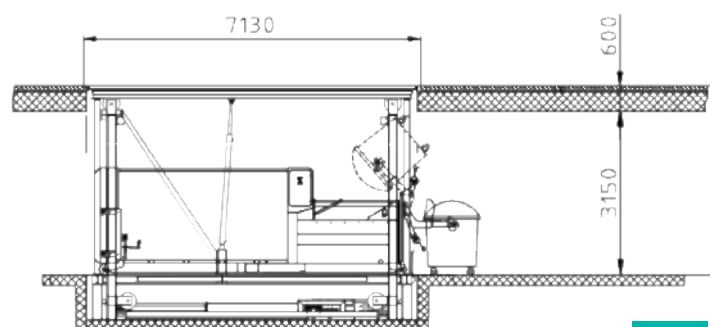
Even in countries like Abu Dhabi, waste disposal is in transition. In these hot regions, however, the majority of waste is still being deposited in wheeled containers above ground level, resulting very quickly in unpleasant odours.

This example shows that there is an alternative: an integrated Quadromat in the building complex.

1 Lift system raised from the underground car park

2 A compactor container being loaded from the lift

3 A wheeled container (1,100 l) is tipped into the compactor container



Lugano

Cardboard collection of premium class

Lugano is a town with 64,000 inhabitants in the Italian-speaking Canton of Ticino in the south of Switzerland. The mix of Swiss and Mediterranean cultures is similar to that of Lombardy in northern Italy. This mélange is evident both in the architecture and in the cuisine. The town is located on the northern bank of Lake Lugano, right in the heart of the mountains.

For years residual waste has been collected in underground containers, so that there are now over 900 such containers in the whole urban area. The historic town centre is home to numerous bars, restaurants, hotels and retail outlets, with huge quantities of cardboard being produced each day. Four compactor systems have been installed immediately adjacent to the town centre, giving both shopkeepers and individuals a convenient way of disposing of their scrap cardboard properly.



Premium features

Professional waste & cardboard collection in the town centre

Whatever the requirements you have on your underground system, we have the breadth and depth of solutions to meet them. With us, individuality and aesthetics are not just fancy words. **We embody them!**

Collection point surrounded by historic buildings in the old quarter of Lugano

This is where visions become reality!

Cardboard

We all know the following situation: Where am I supposed to put the huge amount of cardboard packaging?

Enormous quantities are produced every day, with the trend rising sharply for some time. Those who have a waste disposal station nearby can consider themselves among the lucky ones. Lugano has long had Quadromat compactors below ground level, enabling the every greater flood of cardboard to be handled.



Cardboard collection with a 650-31.
Stone platform with slope, modified to suit the terrain.
Three Sub-Vil underground containers for residual waste.





Lenzburg

The small town with the nationally significant medieval old quarter is located in the heart of the Lenzburg castle region.

This region boasts castles in Lenzburg, Hallwil, Wildegg and Brunegg, as well as Schloss Habsburg. The little town of Lenzburg numbers 11,000 inhabitants and is situated centrally in Switzerland's Mittelland corridor, some 25 km to the west of Zurich.



Living in Lenz

The Lenz district is a modern quarter, yet set in a popular little town.

500 modern homes and many jobs have been created here over the last few years. In this quarter, too, the decision has been made in favour of pioneering waste disposal. Three Quadromat underground lift systems for common organic material and residual waste have been installed in the area, for instance.

Throw-in columns for all waste

The collection process begins with the right choice of throw-in column!

Simply closed: Whether for a residential development, for commercial or industrial customers - we offer you a wide range of individual locking system solutions. Whether via conventional locking cylinder with key or via online access systems with badge or smartphone, the choice is yours! In addition, access solutions can be provided as a new product or retrofitted.

Locking cylinder: A customer-provided house locking cylinder, round cylinder or profile half cylinder are also possible. The cylinder length is agreed with Villiger in advance. The design is possible as a deadbolt or latch lock and can also be optionally combined with a foot pedal.

Access system: Can be operated by badge/smartphone or access card. Opening hours for users can be defined to prevent disposal outside the usual times. With the online access system, user authorisations can be made easily and conveniently from the office using badges and smartphones. The online access system can be installed in the double drum, thus enabling billing by volume. The number of deposits is counted by the access system and recorded in the system.

Access system equipment with refuse sack recognition: Includes a controlling system to reduce/avoid incorrect and loose refuse sacks. Can also be combined with foot pedal. In addition, you get access to the battery status at any time. Remote software updates are also possible.

Lugano type throw-in column



Top throw-in for paper,
Type throw-in column
Lugano 170



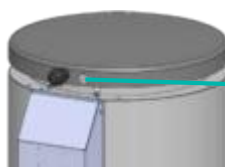
Flap throw-in,
Type throw-in column
Lugano 250



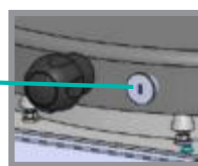
Double drum,
60 - 100 lt, Type throw-
in column **Lugano 200**



Caslano type throw-in column



Lid lock



Access system



Access system
with weighing



Ascona Historic old quarter

Elegant solution for residual waste

Situated right beside Locarno, the holiday resort of Ascona is the lowest inhabited place in Switzerland, standing just 196 metres above sea level on the northern bank of Lake Maggiore. Ascona is famed for its historic old quarter, the south-facing lake promenade with its street cafés and the mild, Mediterranean climate.

The municipality of Ascona (about 5,500 inhabitants) decided on three Quadromat underground compactor containers for the residual waste from the promenade a good ten years ago.





Bellinzona Railway station

Quadromat system for the historic station building in Bellinzona

Everything you could need for day-to-day life, as well as services and much more, can be found at Bellinzona's railway station from dawn till dusk 365 days a year. When the station was being converted, the waste disposal system was also upgraded to the latest standard. A Quadromat system was installed immediately beside it.



Quadromat QMK 650-31:

- with disposal hatch and container tipper for 800-litre containers
- two throw-in columns on the rear for PET bottles and aluminium cans
- all columns come with an access system





Gallusplatz St. Gallen

The city's development began with a settlement on what is now Gallusplatz.

Craftsmen and others, the first natives not to be part of the monastic community, set themselves up right outside the monastery walls. Set within the old quarter of St. Gallen, Gallusplatz seems remarkably spacious. A fountain designed by Rudolf Seitter in 1936 located in the centre of the square commemorates Saint Gallus. The gas and water pipes around Gallusplatz were upgraded in October 2006, while funding for the entire project together with future traffic management arrangements was approved in September 2008. Construction work was scheduled to start in 2011, with all the work on Gallusplatz being completed in April 2012. The anniversary celebrations for St. Gallen were started on 31 August 2012 with the official opening of the square, a local fête and various other events to mark the occasion.

Quadromat in St. Gallen

Underground compactor container in the city centre

The city of St. Gallen gives local inhabitants and shopkeepers in the centre a second option for disposing of their waste alongside collection by the city's waste collection team, which collects refuse sacks from the streets.

However, the confined spatial conditions do not permit conventional underground containers emptied by crane. For these reasons of space, several Quadromat compactor containers integrating seamlessly into the beautiful surroundings of the old quarter were installed below ground at key intersections.





Left: Caslano type throw-in column with access system integrated with the disposal hatch. Platform with paved surface.

Top: Tipping from the transport trailer.

More than just a waste collection system

It's hard to imagine now, but more than 200 of the traditional waste containers would have stood on what is now the revamped Gallusplatz. To replace this huge quantity of bins, four underground Quadromat compactors were installed instead.

Convincing premium features

Many premium features flowed into the development from the start. This led to an extremely versatile lift system almost without parallel. It's not for nothing that we can count on a large and satisfied customer base. Our reference systems speak for themselves.





Norway

Quadromat system at the gateway to the Norwegian fjords

Norway is a Scandinavian country that is known for its mountains, glaciers and deep coastal fjords. The capital, Oslo, boasts many parks and museums, the Vikingskipshuset museum exhibiting Viking ships from the 9th century AD. With its typical colourful wooden houses, meanwhile, Bergen is a popular starting point for boat trips to the dramatic Sogne fjord. Norway is also a beloved destination for fishing, hiking and skiing. Among the best known of the winter sports resorts is Lillehammer, which hosted the 1994 Winter Olympics.





Stavanger

With some 130,000 inhabitants, Stavanger is the fourth largest city in Norway.

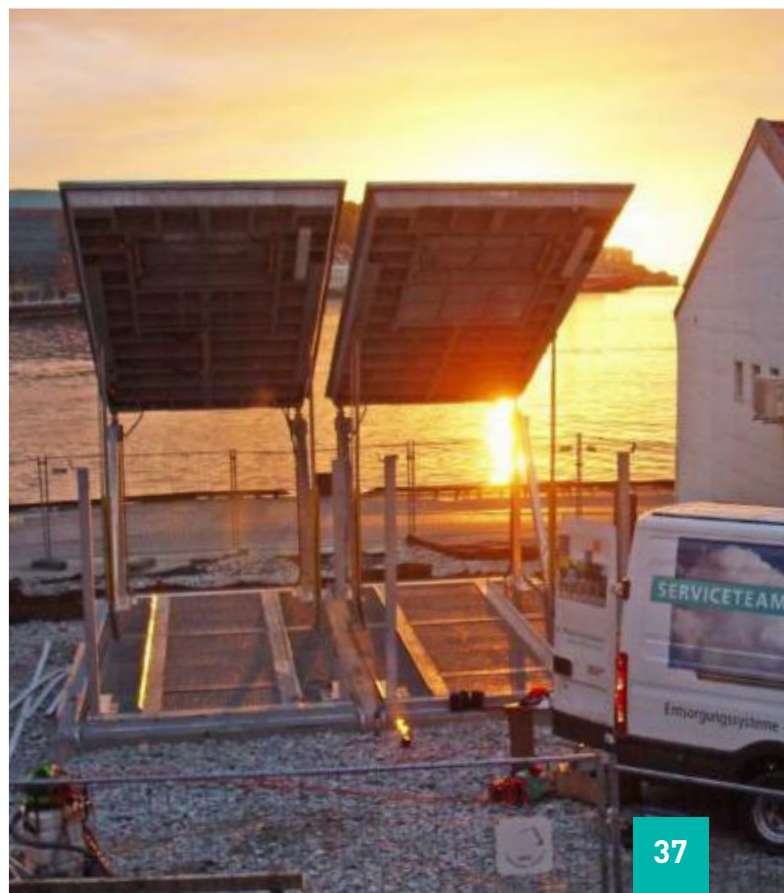
Known as Norway's oil capital, the city's location by the sea has always made Stavanger an international hub which has been influenced by foreign travellers. Stavanger offers a number of very interesting museums, such as the Norwegian oil museum.

Access to the old quarter is difficult for waste collection trucks, so the waste disposal department goes about its duties using small electric vehicles, collecting residual waste and cardboard. To ensure short distances for unloading, two underground compacting stations were installed outside the old quarter.

Always in productive use

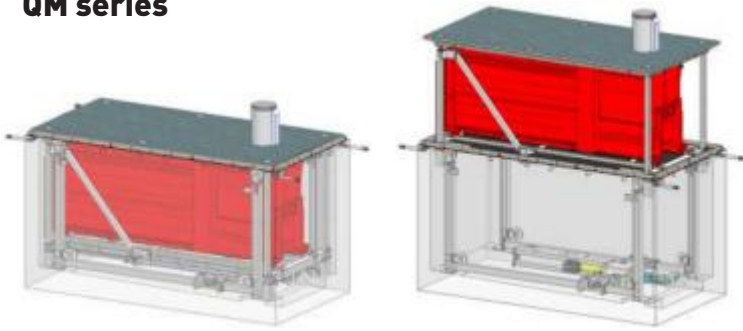
Often the huge quantities of waste that are collected and loaded onto small vehicles each day have to be taken long distances to the disposal point. And we have the solution: an underground Quadromat compacting station. You can install and unload the system precisely where the waste arises, saving you time and money while also protecting the environment.

Installation by the Villiger service team



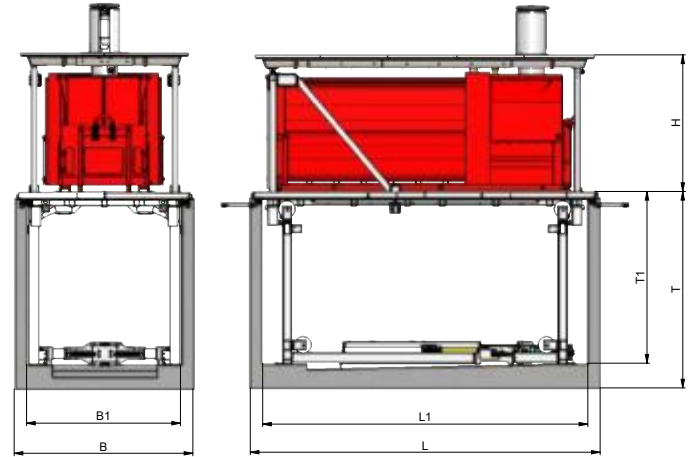
Quadromat types and planning principles

QM series

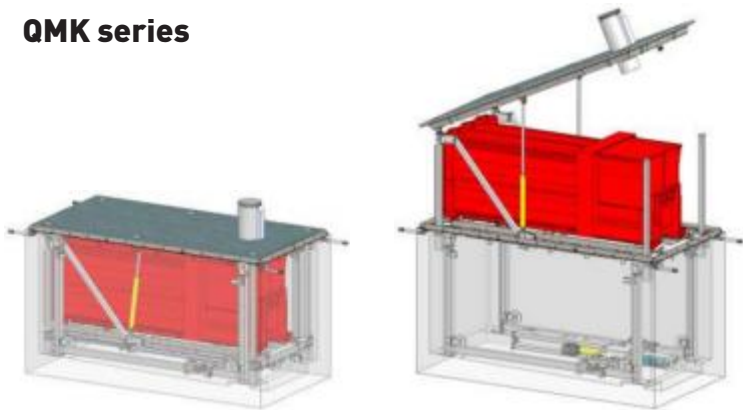


| QM | 530-26 | 530-31 | 650-31 | 650-31 XL |
|------------------------------|--------|--------|--------|-----------|
| L | 5800 | 5800 | 7000 | 7000 |
| L 1 | 5370 | 5370 | 6570 | 6570 |
| T | 3970 | 3970 | 3970 | 4170 |
| T 1 | 3470 | 3470 | 3470 | 3670 |
| H | 2880 | 2880 | 2880 | 3080 |
| B | 3040 | 3540 | 3540 | 3540 |
| B 1 | 2610 | 3110 | 3110 | 3110 |
| Lifting capacity approx. (t) | 15 | 15 | 15 | 16 |

In this model the platform cannot be tipped. When a compactor container is changed over, the container must be hoisted out of the lift and then lifted onto the truck, or vice versa.

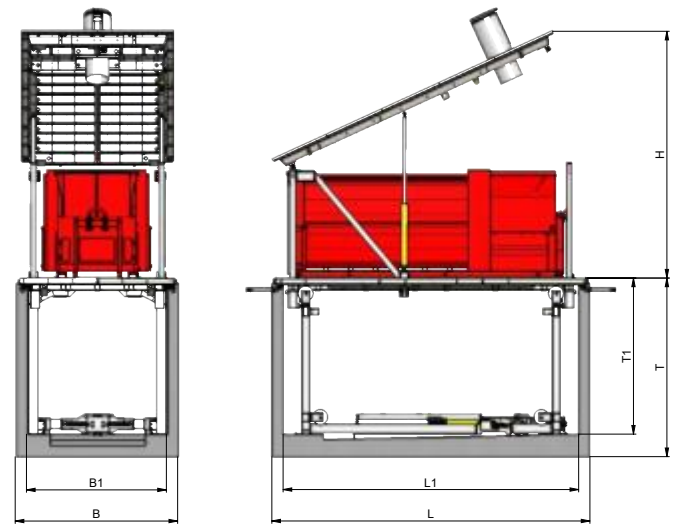


QMK series



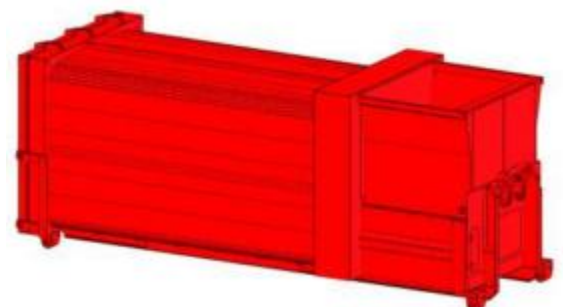
| QMK | 530-26 | 530-31 | 650-31 | 650-31 XL | 700-32 |
|------------------------------|--------|--------|--------|-----------|--------|
| L | 5800 | 5800 | 7000 | 7000 | 7500 |
| L 1 | 5370 | 5370 | 6570 | 6570 | 7000 |
| T | 3970 | 3970 | 3970 | 4170 | 4170 |
| T 1 | 3470 | 3470 | 3470 | 3670 | 3670 |
| H | 5200 | 5200 | 5500 | 5500 | 6000 |
| B | 3040 | 3540 | 3540 | 3540 | 3710 |
| B 1 | 2610 | 3110 | 3110 | 3110 | 3210 |
| Lifting capacity approx. (t) | 15 | 15 | 15 | 15 | 16 |

In this model the platform can be tipped up by means of a hydraulic cylinder. The lift system enables the compactor container to be hoisted onto or lowered from the truck.



QM and QMK compactor containers

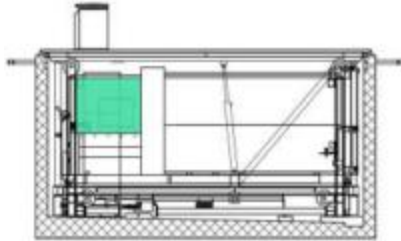
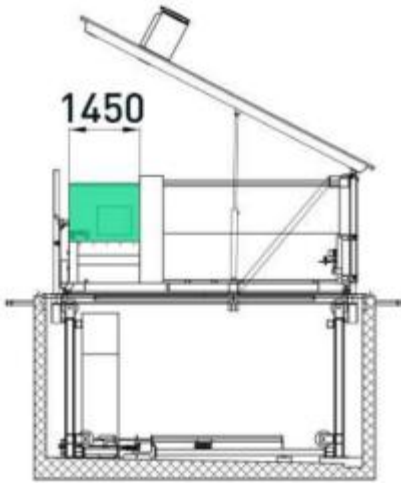
| Container | 530-26 | 530-31 | 650-31 | 650-31 XL | 700-32 |
|-------------------------|----------------------|----------------------|----------------------|-------------------|----------------------|
| Max. length | 5250 | 5250 | 6470 | 6470 | 6900 |
| Max. width | 2050 | 2450 | 2450 | 2450 | 2550 |
| Max. height | 2550 | 2550 | 2550 | 2720 | 2720 |
| Max. contents (approx.) | 10-12 m ³ | 14-16 m ³ | 16-19 m ³ | 22 m ³ | 21-23 m ³ |
| Skip | On request | On request | On request | No | No |
| Unloader | Yes | Yes | Yes | Yes | Yes |
| Weight (kg) | 4150 | 4350 | 4550 | 4550 | 4600 |



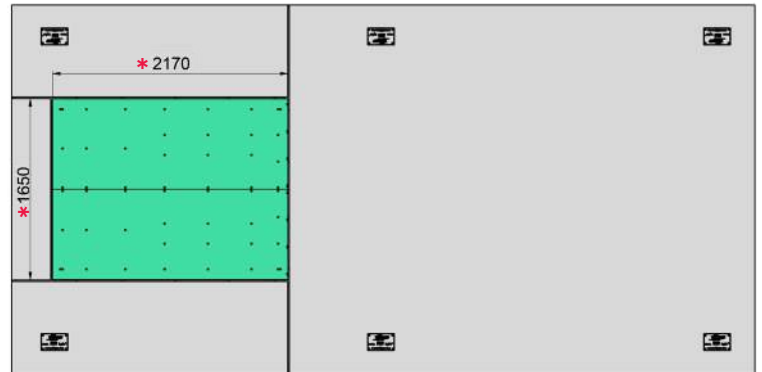
Compactor container planning

Waste disposal column

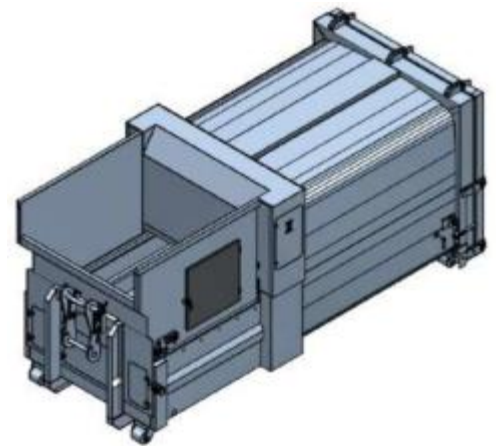
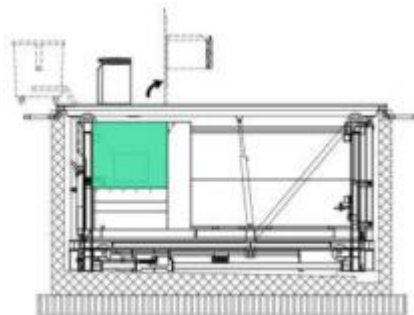
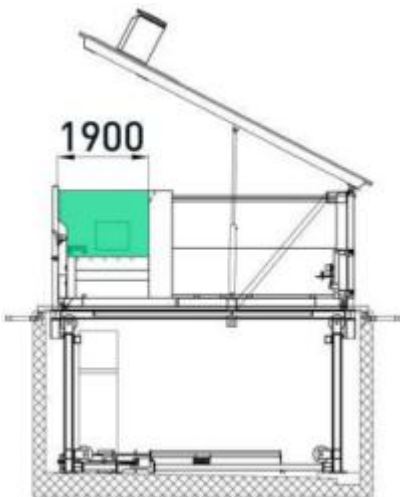
Where waste is disposed of directly into the column, the hopper of the compactor container is made smaller, thus increasing the volume of the container.



Disposal hatch / option with throw-in column: In the case of an integrated disposal hatch, the funnel of the compactor container is configured larger so that the container has sufficient space when tipping.



* Disposal hatch dimensions

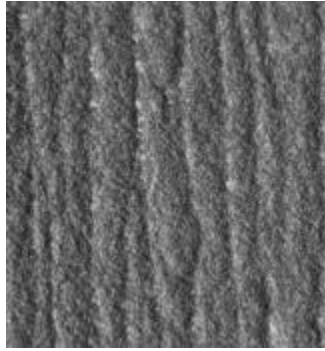


Important requirements on compactor containers

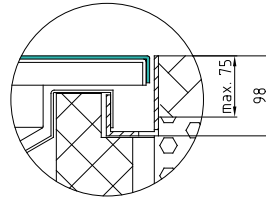
- Tightness of the tailgates through circumferential seal & clamping bolts
- Raised walls on the funnel
- Lateral service door on the funnel
- Potential-free contacts tapped via plugs (connection to the lift system)
- Automatic start by means of a light barrier
- Compacting time-controlled (thermal protection)
- Fill level reporting system via email

Platform surfaces

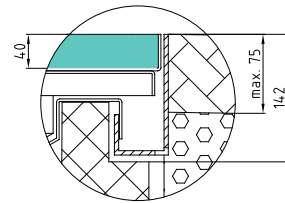
Overview of base surfaces



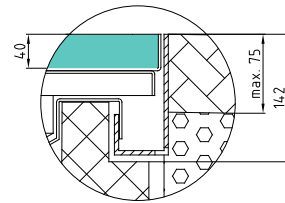
Hard covering (4 mm)



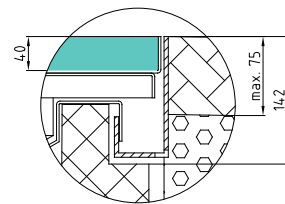
Mastic asphalt (40 mm)



Paving stone surface (40 mm)



Stone coating (40 mm)



Ask the professionals!

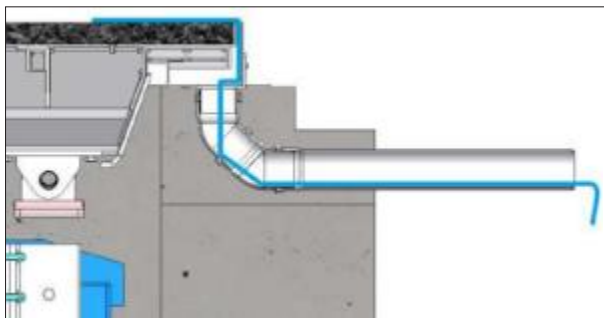
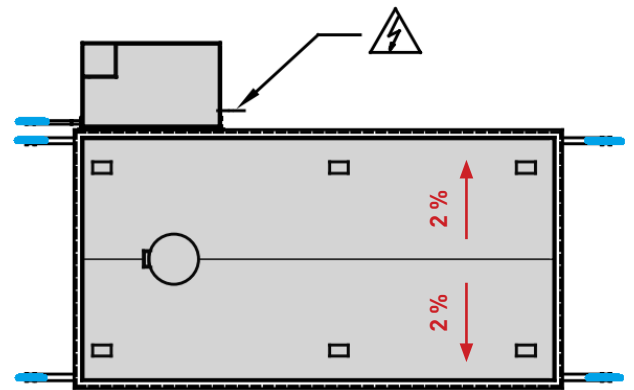
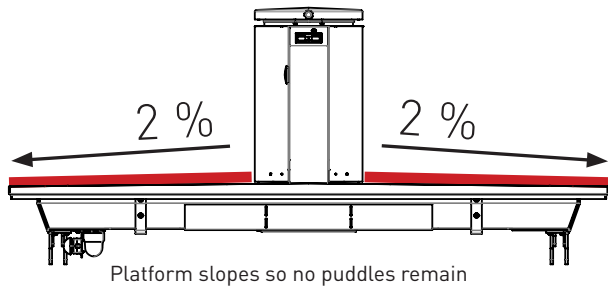
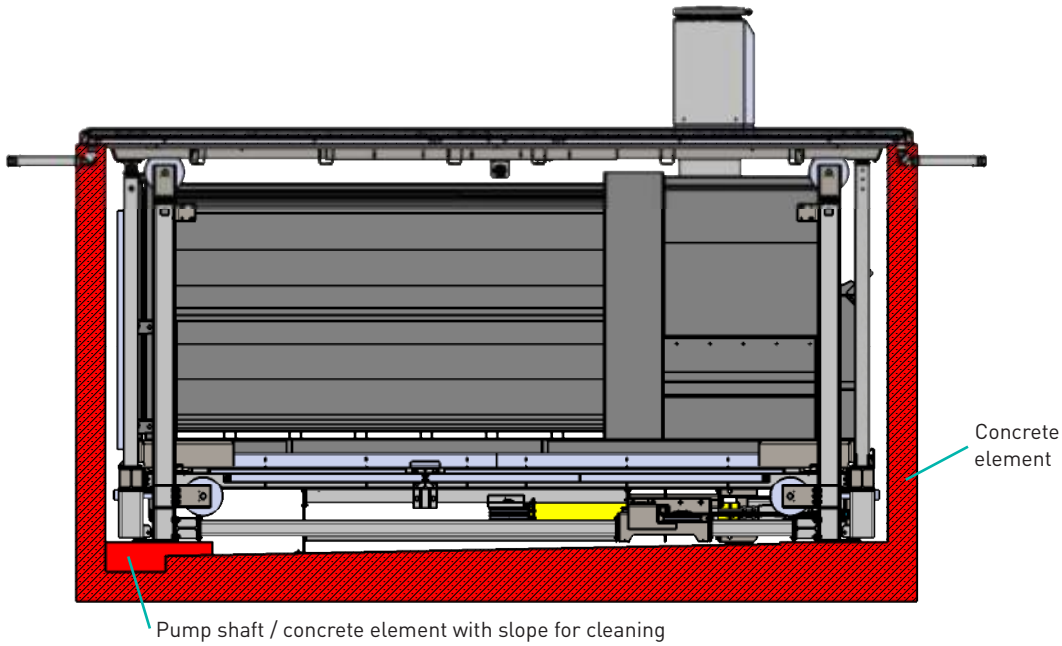
We also supply all platform surfaces, with mastic asphalt as the default.

Laying mastic asphalt

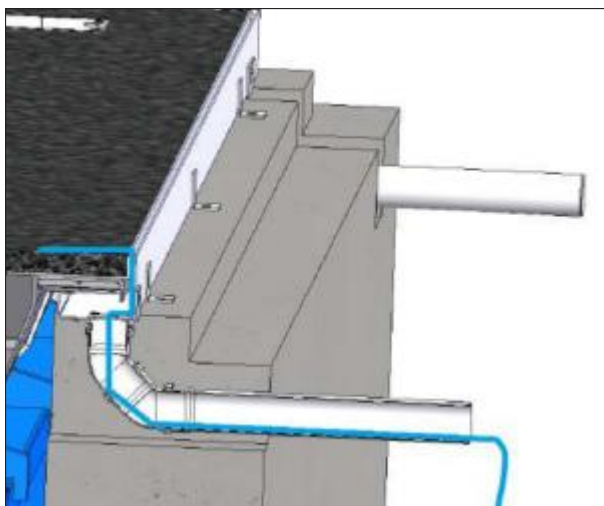


Drainage / closing frame

The closing frame separates the lift platform and concrete element from the soil / road.
All surface water runs off the platform into the closing frame.



Closing frame with sewer connection



Drainage pipes, technician shaft and platform





Quadromat QMS 600-25

The new series

Patent no. EP3694792A1 (patent applied for)

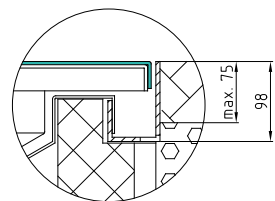
Innovations made by Villiger

At Villiger, every major step forward is driven by a spirit of innovation. It constantly drives our passion for the conceptualisation, design and creation of pioneering products and solutions.

For new requirements: We have met real Quadromat professionals like you. You have told us of your requirements and shared your experience of Villiger lift systems with us. And we have turned these into a new series.

- a) Can be transported by truck and in sea containers (suitable for sea freight, 20 feet)
- b) Available as a concrete element or steel trough, galvanized
- c) For compactor container volumes of 10 m³
- d) Can be supplied completely ready to connect
- e) Short assembly time, ready for use very quickly

Hard covering (4 mm)

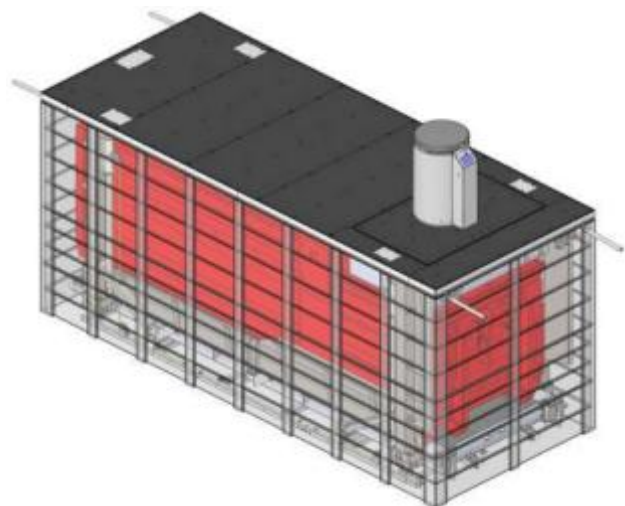
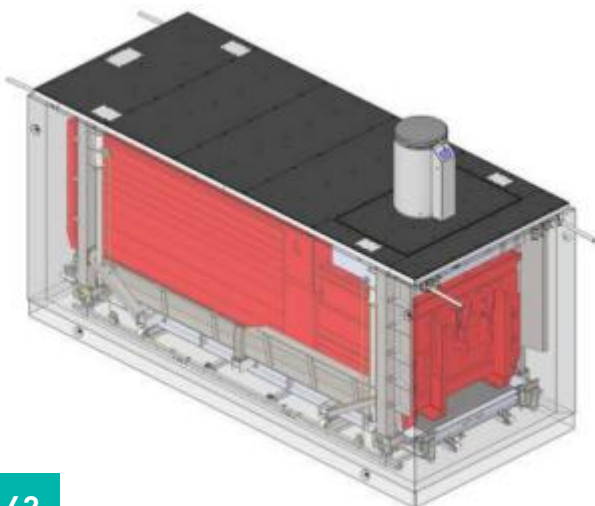


Quadromat QMS 600-25

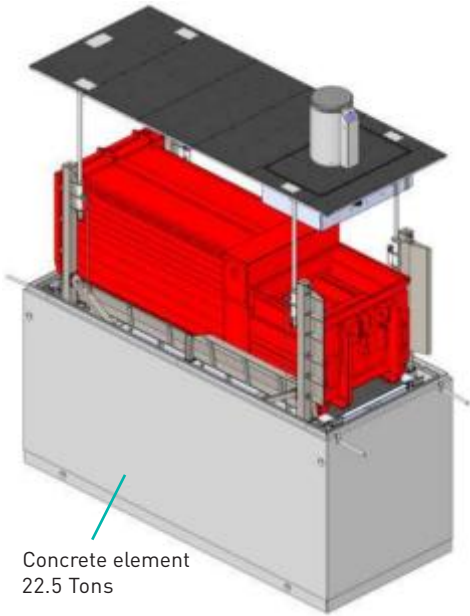
Version with precast concrete element.

Quadromat QMS 600-25

Steel container version, galvanized, 20 feet.
Can be transported as a sea freight container.

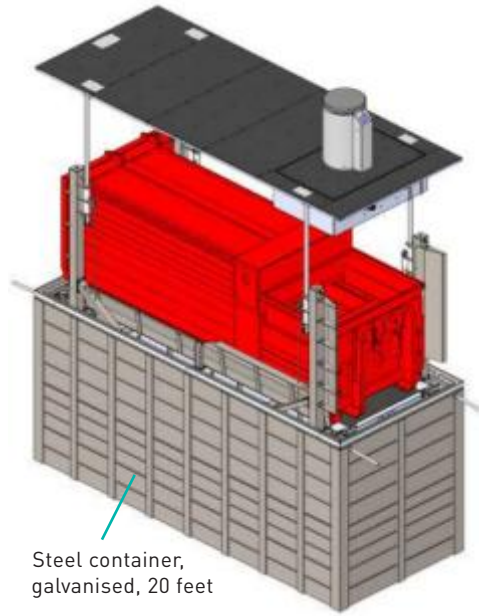


Lift extended, with concrete element



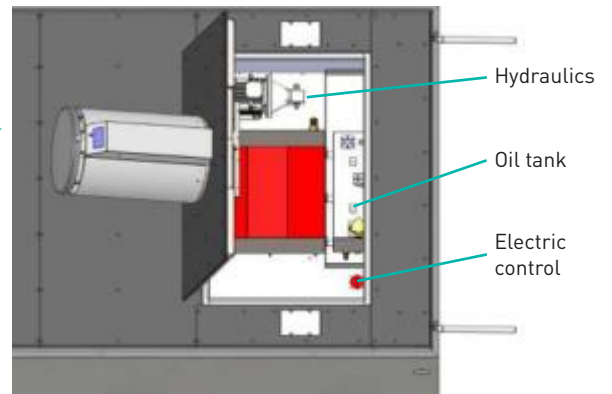
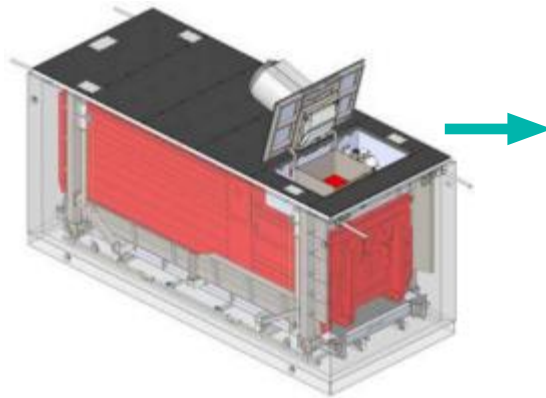
Concrete element
22.5 Tons

Lift extended, with steel trough

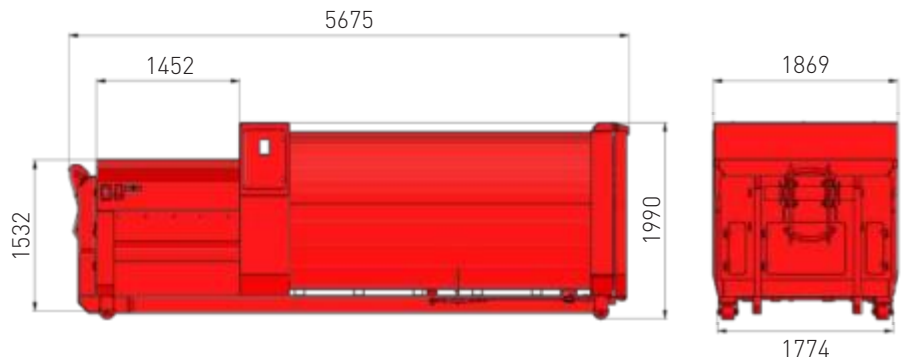
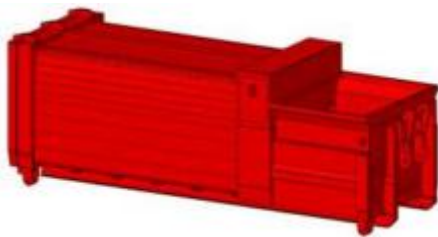


Steel container,
galvanised, 20 feet

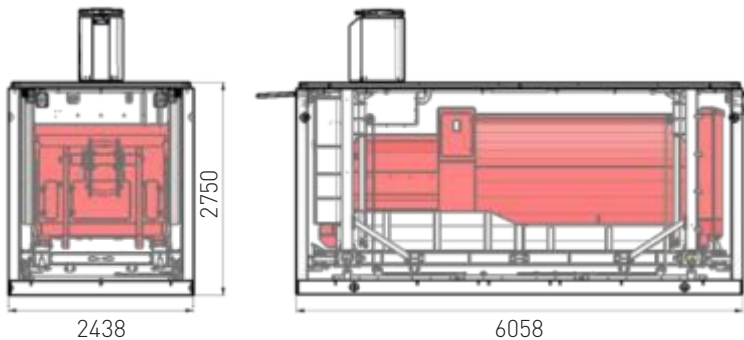
All hydraulic systems and the electric control are integrated into the platform. Access is gained by opening the service hatch.



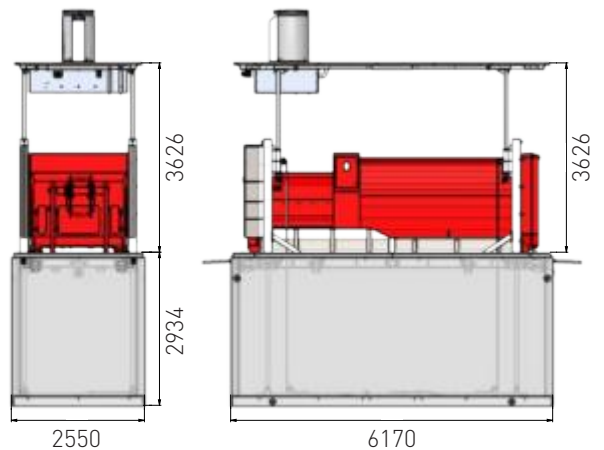
QMS compactor container, capacity 10 m³



20-foot steel container dimensions



Concrete element dimensions



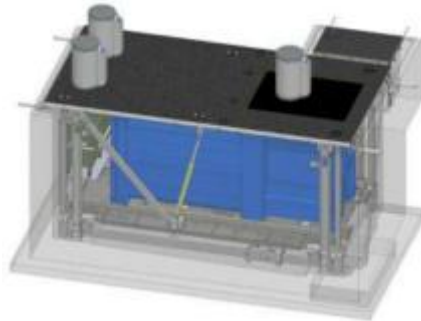
Many options. One clear choice.

The Quadromat lift system is rightly known for its unusually high degree of efficiency, the space-saving way it collects waste, and not least its enormous user friendliness.

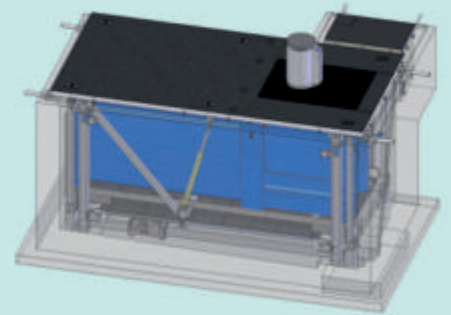
Unique variety: the multifunctional Quadromat lift system

The Villiger Quadromat combines outstanding features and great flexibility with a large number of additional functions. That makes it a cost-efficient jack-of-all-trades for local authorities and service providers.

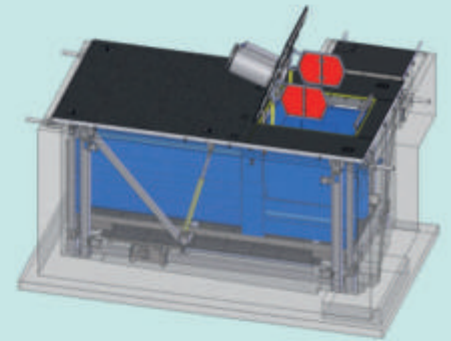
QMK-B2: Throw-in column for the collection of residual and organic waste.



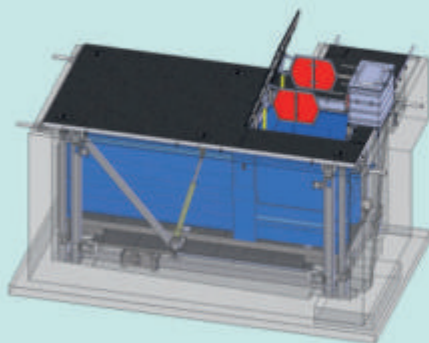
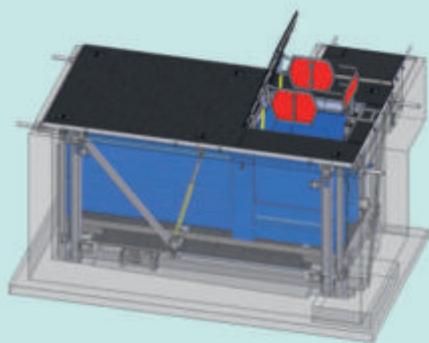
QMK-AE-10: Disposal hatch WITH throw-in column, vehicle barrier and side guards



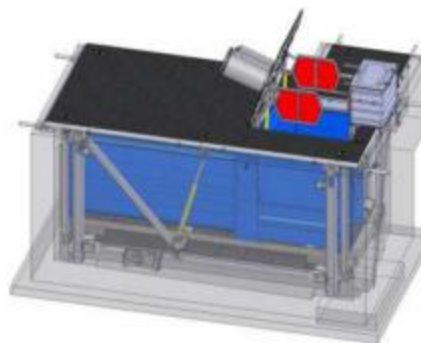
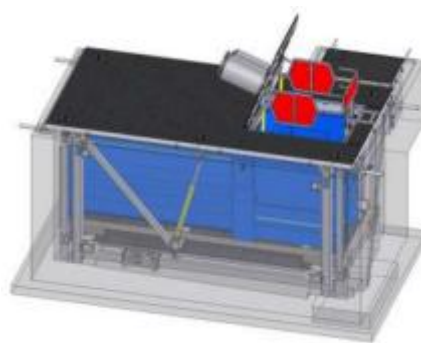
QMK-AE-10



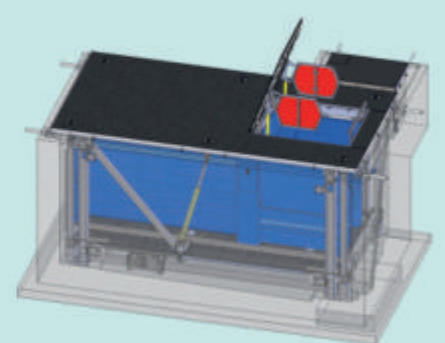
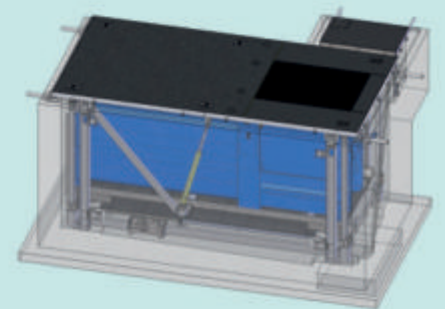
QMK-AK-10: Disposal hatch WITHOUT throw-in column, with container tipper and side guards



QMK-AEK-10: Disposal hatch WITH throw-in column, container tipper and side guards



QMK-A-10: Disposal hatch WITHOUT throw-in column, with vehicle barrier and side guards



Why a Villiger Quadromat is the only right choice

More than 100 plants in operation every day (as of 2020) and massive demand speak for themselves!

Because our Quadromat lift system was not only developed to provide citizens with excellent convenience for 24-hour waste collection - it also significantly reduces transport costs and also saves large amounts of CO₂.

The outstanding quality, the unique variety and the extended service life due to the galvanisation of all parts and an unbeatable service contribute to the popularity of our systems.

Should something not work, we guarantee you an all-round excellent customer care with our trained service technicians or the wide distribution partner network.



Features in detail

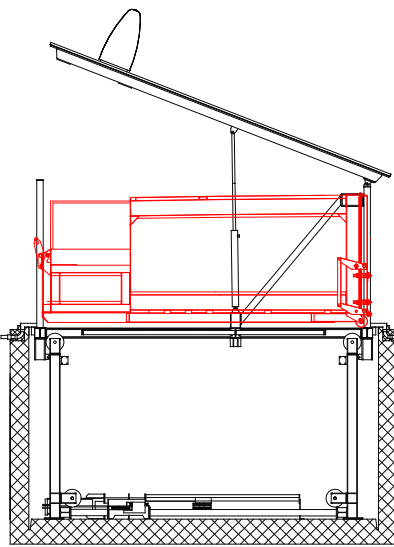
| | |
|---------------------------------------------------------------|----------------------------------------------------------------------------------------------------------------------------------|
| Everything from one source / Manufacturer competences: | Project planning, production, assembly, maintenance, spare parts, service |
| Various platform versions: | Asphalt stone surface/hard surface, slope compensation adjustment. Can be driven on up to 40 tonnes. Hydraulic disposal hatches. |
| Robust steel constructions in a modular system: | All components completely galvanised, durable construction/materials |
| Highest quality / Control and safety: | Tested safety concept SPS, protection class Performance-Level D. Type-tested / with 4 locking bolts (for service) |
| Press container deployment: | Brand-independent use of press containers |
| Configuration / Individual solutions: | Unbeatable application possibilities, whether outdoors or inside the building |
| Exceptional selection of throw-in columns: | Drop columns available with various options such as: bag weighing, access system (for cardboard, organic and residual waste) |
| Maximum payload: | Lift system payload approximately 14 tonnes. Press container 22 m ³ , payload from 8 to 9 tons. |
| Labour-saving solutions with a tilting platform: | For a more rational and comfortable exchange of the press containers. |
| Discharge flap for the large waste: | Disposal hatch for emptying small and large vehicles. |
| References: | Wide range of references at home and abroad and satisfied customers all over the world. |

Technical data

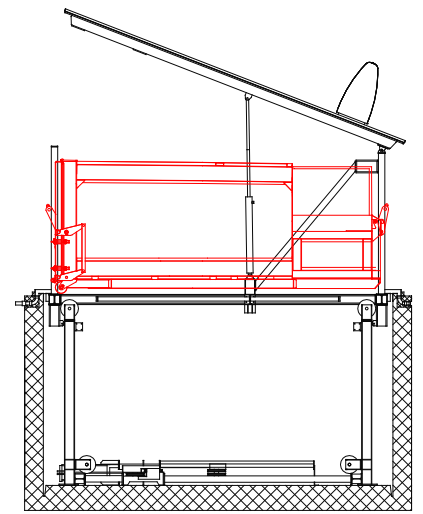


Throw-in column at the front of the lift system. The container can be loaded and emptied directly.

Throw-in column at the rear of the lift system. To empty the compactor container, it must be turned.



Front pickup

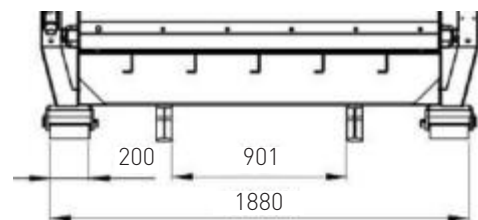
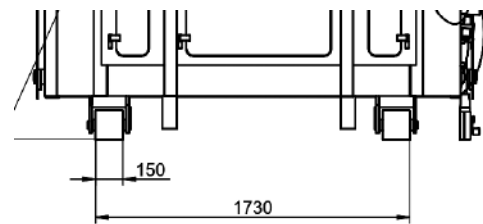


Rear pickup

Guide rail for positioning the compactor container



Possible castor dimensions of compactor containers



Buffer container

As an option we offer a buffer container for sacks of residual waste while the compactor container is being removed (emptying).

Function: The store can be locked and emptied electrohydraulically. Capacity for about ten refuse sacks.



Technical data



Can take up to 40 tons in weight!

Platform version

Standard = 500 kg/m² or light vehicles

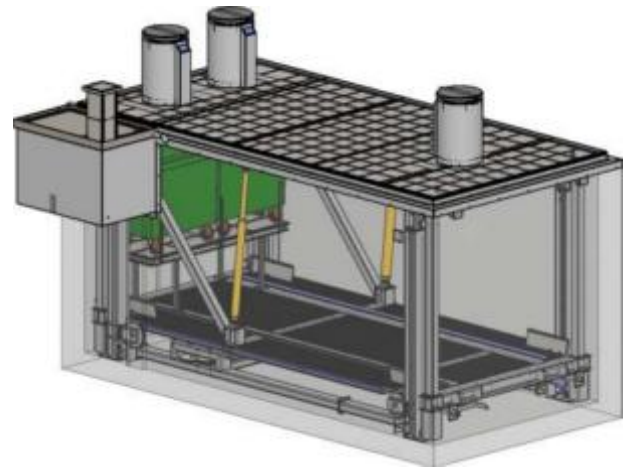
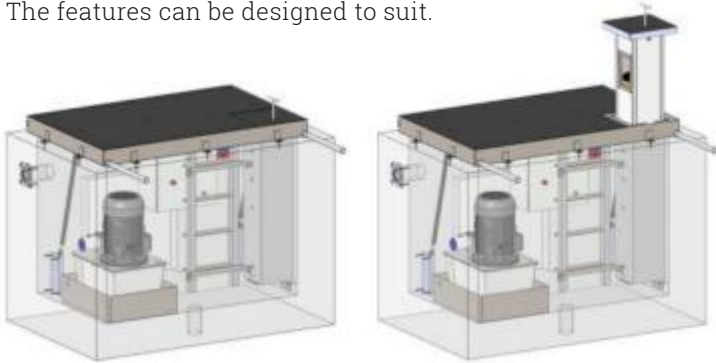
Reinforced = 4,000 kg/m² with truck up to 40 tons



Built-in technician shaft

Details that count

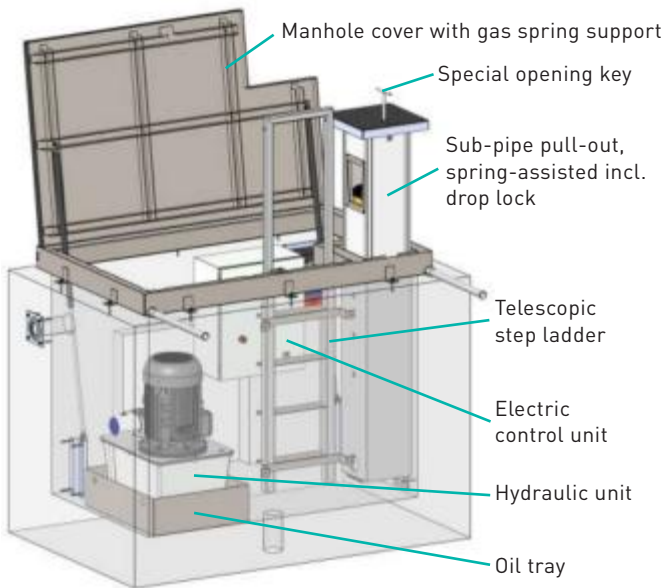
The mobility of a lift system is something very close to our hearts. The available designs and options cover all the requirements for a safe and convenient underground lift system. The features can be designed to suit.



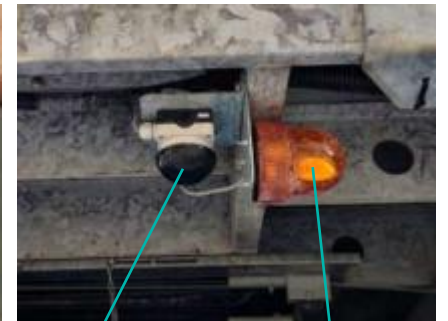
Sub-pipe pull-out

Technician shaft

The technician shaft is positioned immediately adjacent to the concrete element. The shaft contains all the components, such as the hydraulic systems and the control.



Two-hand operation

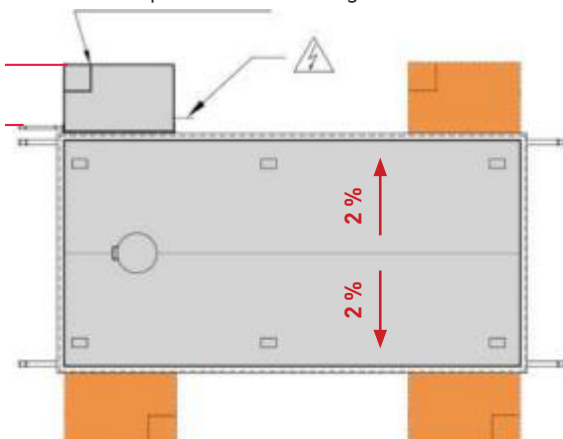


Safety button

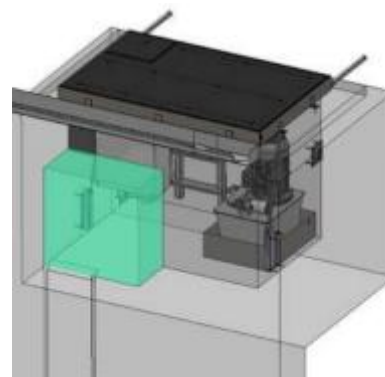
Acoustic and rotating light signal

Options technician shaft

Possible technician shaft positions
(other positions following clarification)



Diffuser to concrete element
(precaution in case of possible water ingress)



Free-standing BAS 10 control column



Made of stainless steel with door for removal of the remote control. The hydraulic systems and electric control are installed inside the building.

Free-standing BAS 20 control box



Made of stainless steel with a front door. All hydraulic and electric control system components are integrated in the cabinet. Flap opening on the side for operating the remote control.



Wall-mounted BAS 30 control unit

Control unit in wall housing with door for removal of the remote control. The hydraulic systems and electric control are installed inside the building.

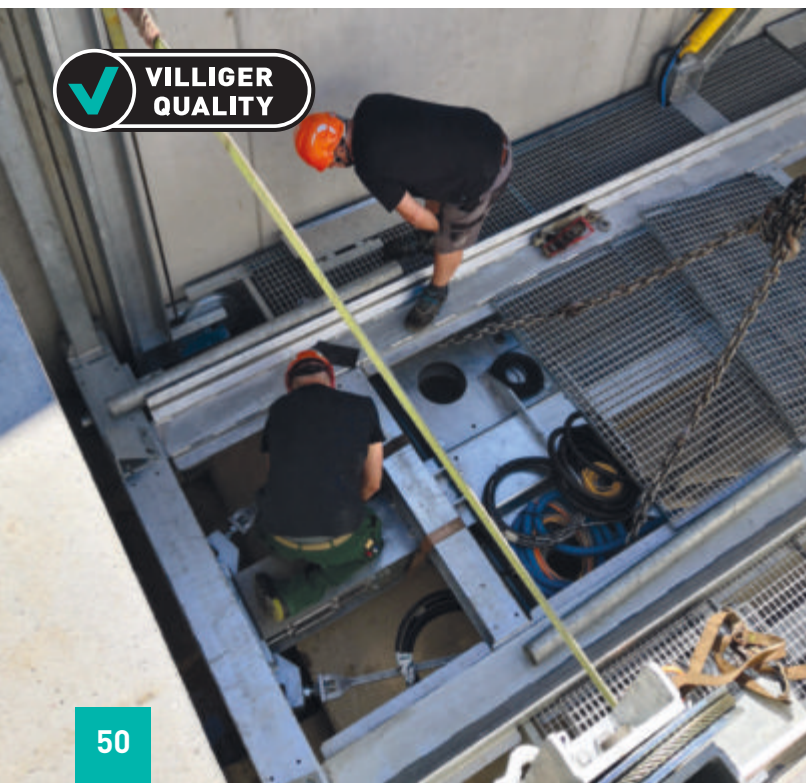




Installation / project planning

We are the professionals

We have a passion for building waste management systems of the very highest quality. We apply the same yardstick when delivering systems. Our trained engineers use the latest tools and vehicles to get around.





Left:
Assembly work of a
lift system.

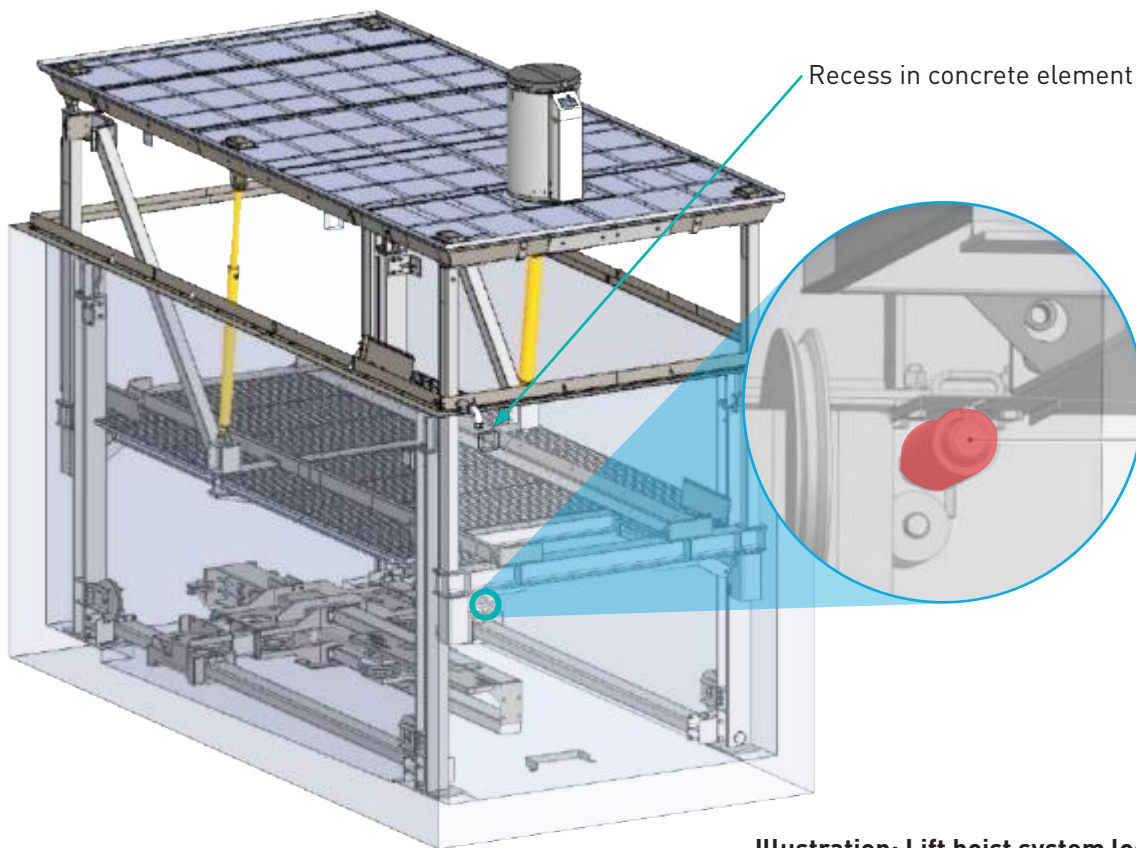
Above: Transport of a partially assembled lift system with platform, incl. installed mastic asphalt.

Below: Quadromat lift system installation in the extension complex of a historic building.



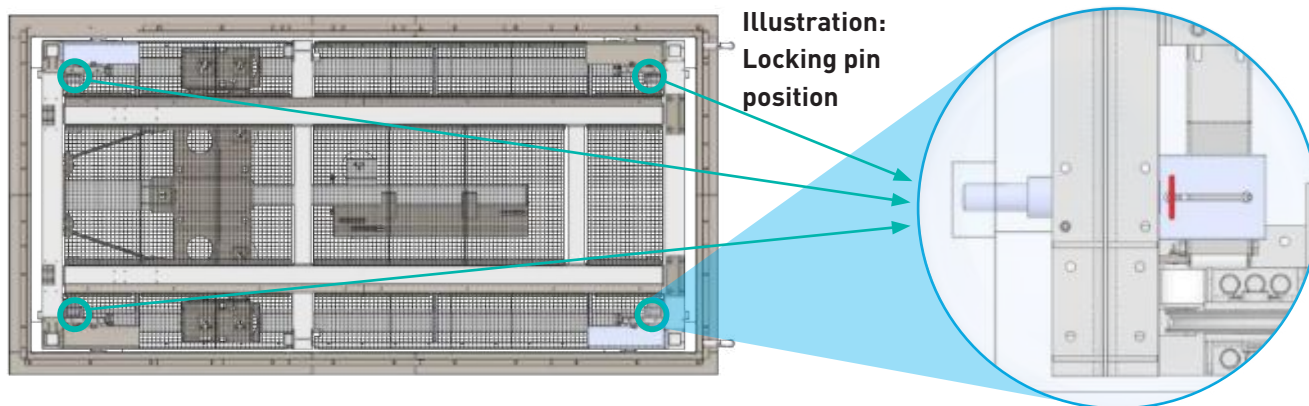
Safety equipment

The following illustration shows one of the four locking pins of the lift hoist system. There are two on each of the ends of the lower platform. All four locking pins must be inserted into the recesses in the concrete element and locked in position before the start of any cleaning or maintenance work.



Note

Only original spare parts from Villiger AG or spare parts from its suppliers may be used. The use of any parts other than original spare parts will result in all warranty claims being invalidated. In this case, the manufacturer will also not accept any liability whatsoever for consequential damage to people or the system.



Locking pin open



Locking pin closed

The four locking pins are located under the metal flap at the marked locations.

Emergency opening of the pavement platform

The platform is fitted with emergency openings that are closed by cover plates. In the event of a major defect (damage to the hydraulic systems, etc.), these emergency openings can be used to lift the entire system out of the concrete pit in separate assemblies using a suitable crane vehicle. This work must always only be performed by Villiger specialists!

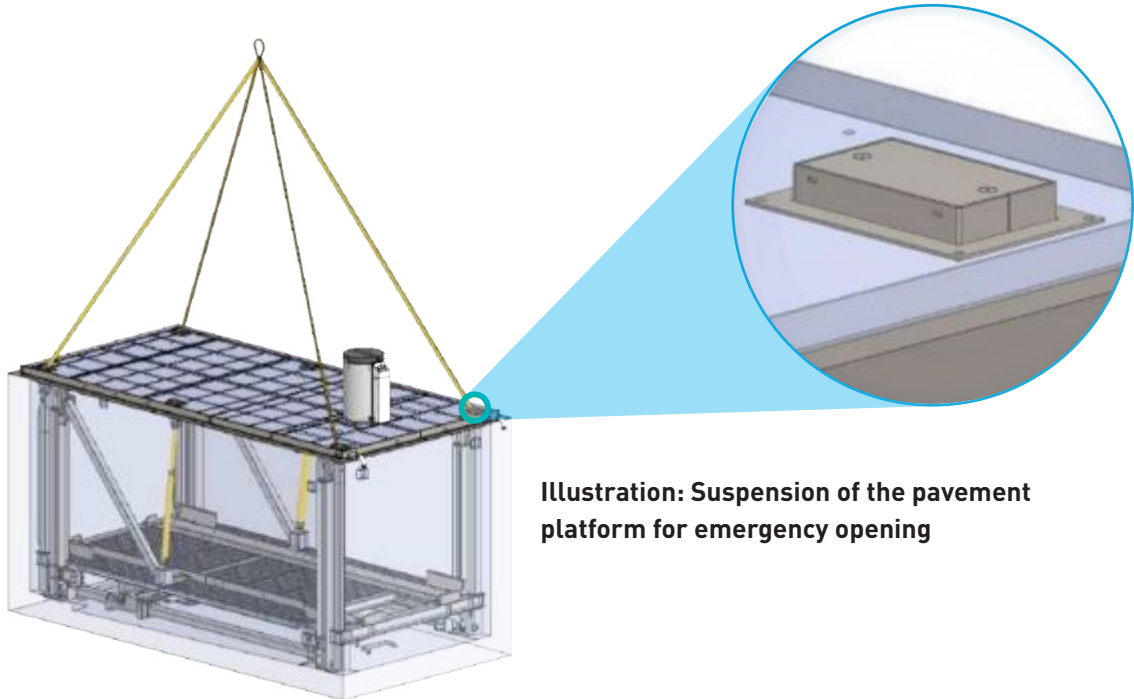


Illustration: Suspension of the pavement platform for emergency opening



Transport of a platform and associated installation work.



Quadromat conversions





Liftomat

The flexible modular system

Liftomat installations: an alternative solution for an aesthetic cityscape.

In historic districts and modern housing developments, the Liftomat is the ideal solution for making the waste bins disappear underground. This guarantees a clean townscape!



Instead of standing on the street, large refuse containers are placed on a hydraulically driven lifting platform and emptied using conventional emptying vehicles.

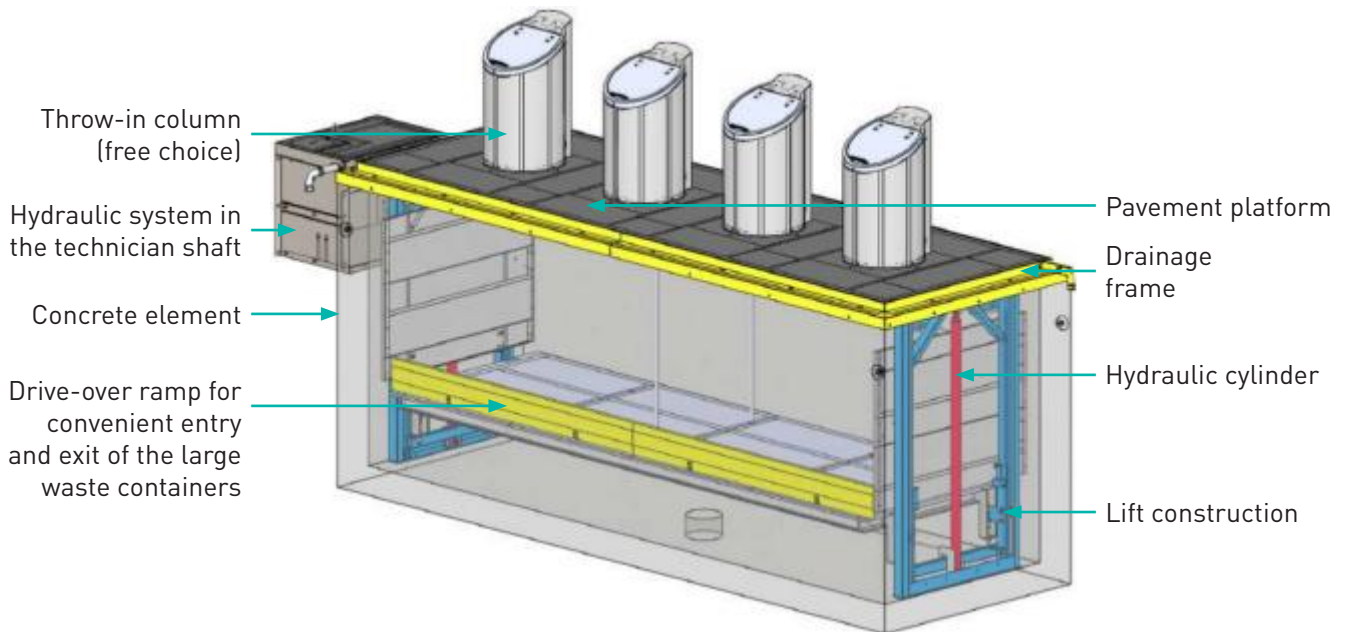


The structure of the Liftomat

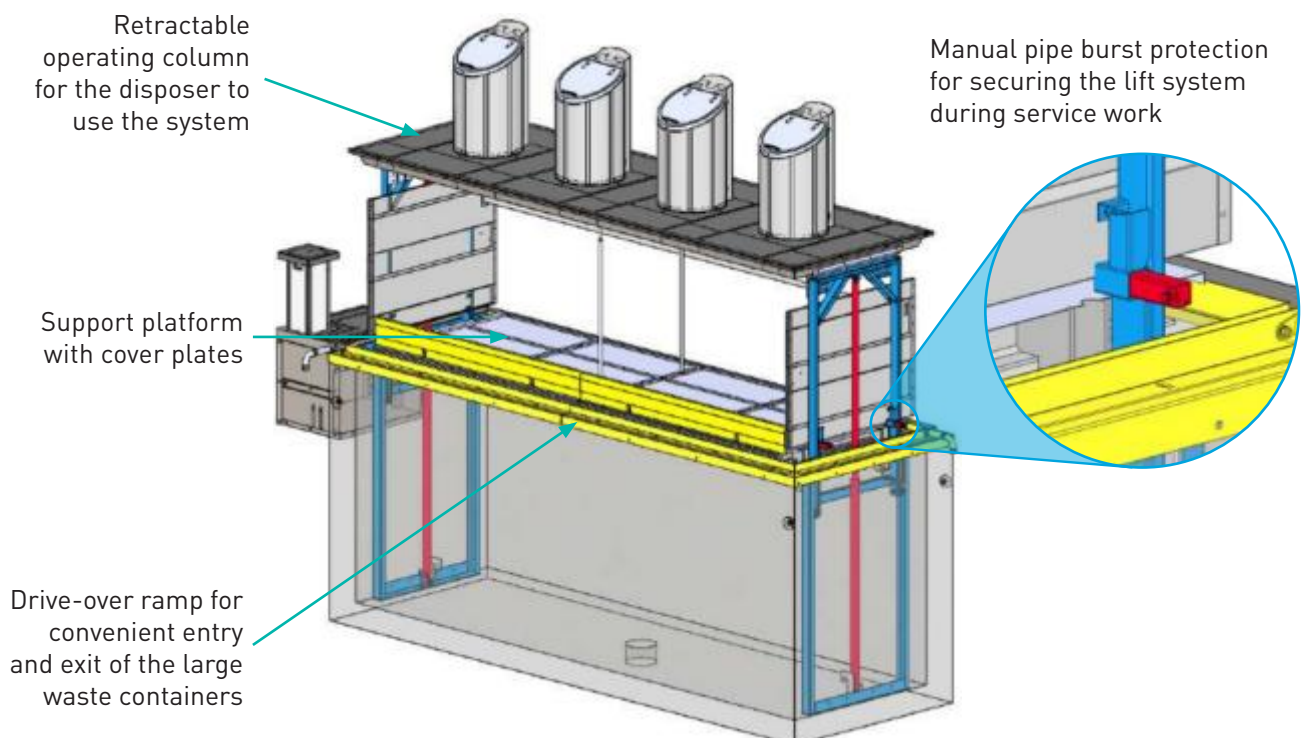
The Liftomat consists of four essential components:

- 1. Concrete element** Prefabricated concrete element - optionally to be provided by the customer
- 2. Lift** Lift system with a walkway platform and lower support structure
- 3. Throw-in column** The throw-in column is centrally assembled on the platform and above the bin
- 4. Power unit** Hydraulic power system - optionally electric

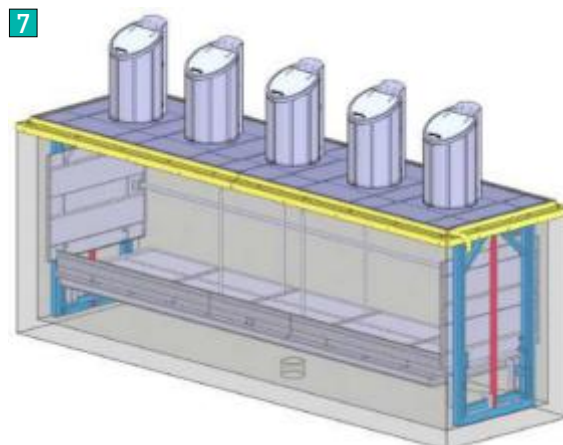
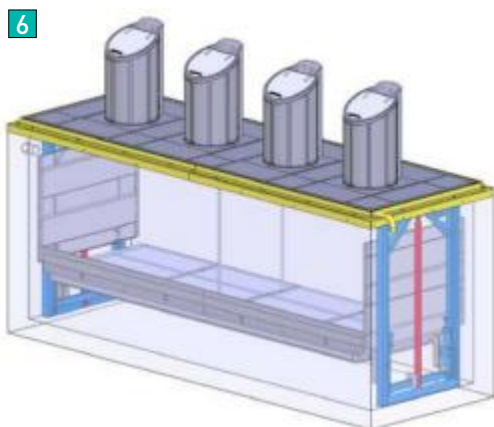
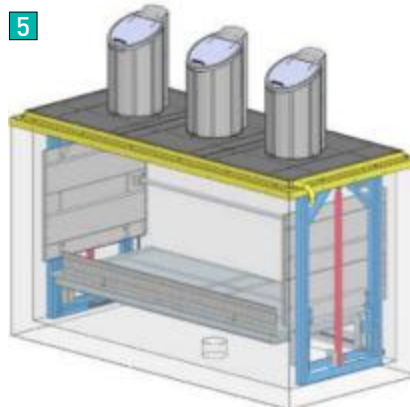
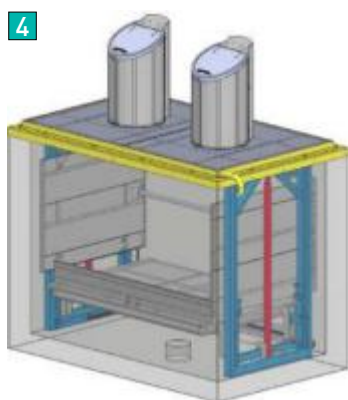
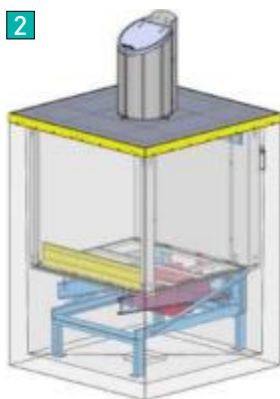
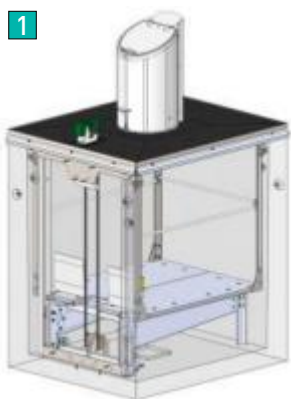
Lift position in the underground



Lift position extended



Type designations and Planning bases



LU 150 L

Container 1 large waste container à 1100 l with
Throw-in column flat lid or smaller volume

LU 200

Container 1 container à 1100 litres (max.)
Throw-in column 1 piece (free choice of column)

3 LU 200

Container Textile cabinet, 4.8 m³
Throw-in column 1 piece (free choice of column)

LU 300

Container 2 containers à 1100 litres (max.)
Throw-in column 2 pieces (free choice of column)

LU 400

Container 3 containers à 1100 litres (max.)
Throw-in column 3 pieces (free choice of column)

LU 500

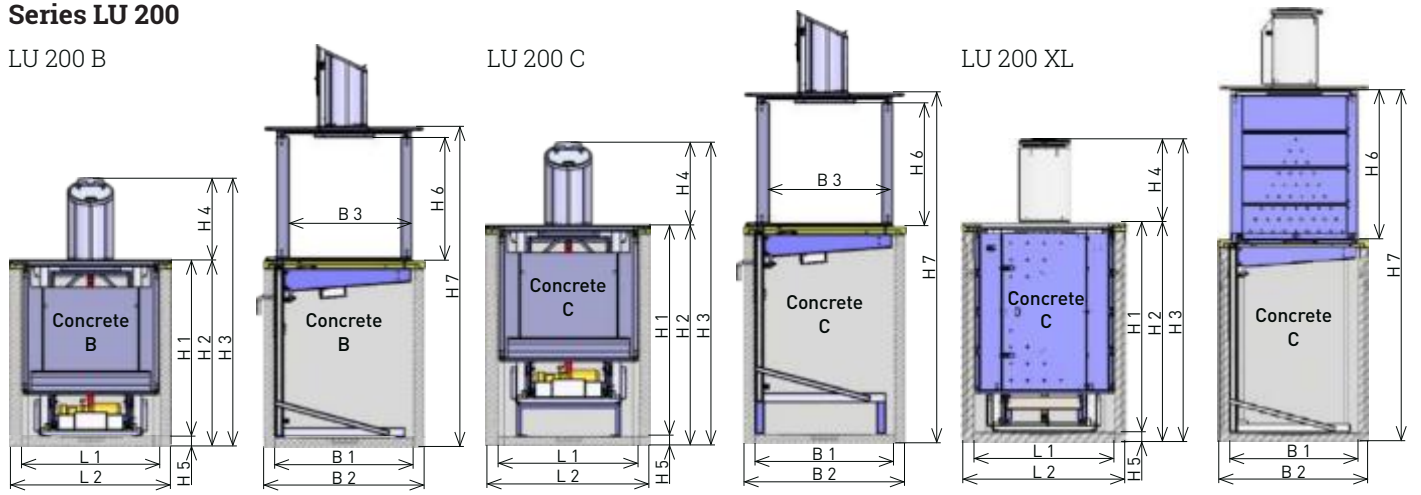
Container 4 containers à 1100 litres (max.)
Throw-in column 4 pieces (free choice of column)

LU 600

Container 5 containers à 1100 litres (max.)
Throw-in column 5 pieces (free choice of column)

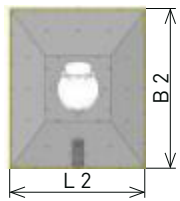
Series LU 200

LU 200 B

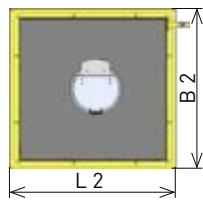


| Mass (mm) | L1 | L2 | H1 | H2 | H3 | H4 | H5 | H6 | H7 | B1 | B2 | B3 |
|------------|------|------|------|------|------|------|-----|------|------|------|------|------|
| LU 150 B-L | 1385 | 1650 | 2130 | 2250 | 3245 | 995 | 120 | 1400 | 3718 | 1684 | 1950 | 1450 |
| LU 200 B | 1685 | 1950 | 2130 | 2250 | 3245 | 995 | 120 | 1577 | 3827 | 1684 | 1950 | 1450 |
| LU 200 C | 1685 | 1950 | 2518 | 2638 | 3633 | 995 | 120 | 1577 | 4215 | 1684 | 1950 | 1450 |
| LU 200 XL | 1685 | 1950 | 2518 | 2638 | 3649 | 1011 | 119 | 1973 | 4491 | 1685 | 1950 | x |

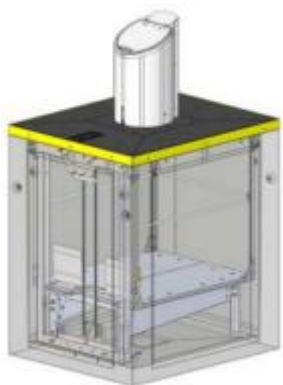
Series LU 150 B-L (Cordless drill)



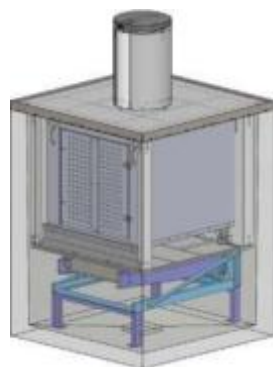
Series LU 200



Possible variants:



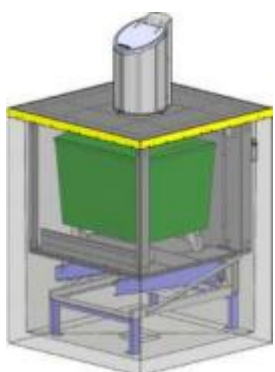
LU 150 L



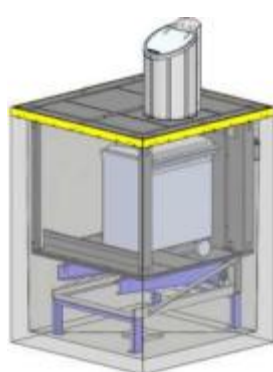
Textile cabinet 3 m³



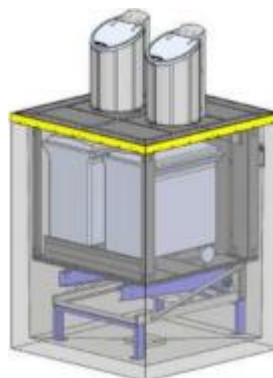
Textile cabinet 4.8 m³



Large waste containers
1*100 l

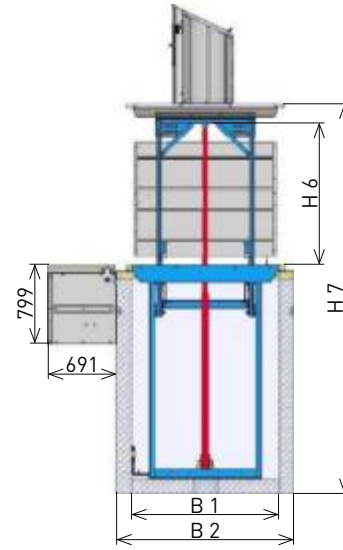
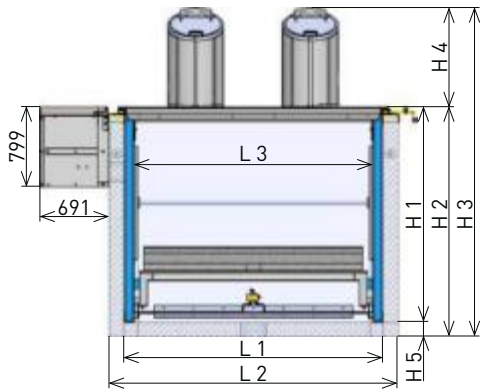


Large waste containers
770 l



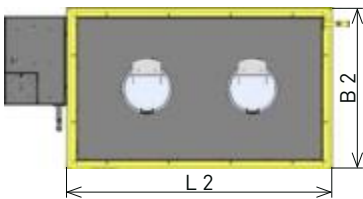
Large waste containers
2 x 770 l

Series LU 300 - 600

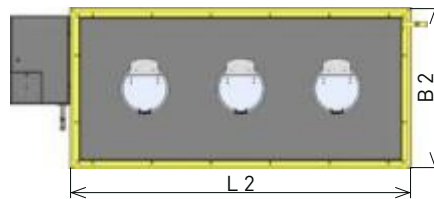


| Mass (mm) | L1 | L2 | L3 | H1 | H2 | H3 | H4 | H5 | H6 | H7 | B1 | B2 |
|-----------|------|------|------|------|------|------|-----|-----|------|------|------|------|
| LU 300 | 2600 | 2900 | 2330 | 2159 | 2309 | 3304 | 995 | 150 | 1489 | 3798 | 1500 | 1800 |
| LU 400 | 3600 | 3900 | 3330 | 2159 | 2309 | 3304 | 995 | 150 | 1489 | 3798 | 1500 | 1800 |
| LU 500 | 5000 | 5300 | 4730 | 2159 | 2309 | 3304 | 995 | 150 | 1489 | 3798 | 1500 | 1800 |
| LU 600 | 6050 | 6350 | 5770 | 2159 | 2309 | 3304 | 995 | 150 | 1489 | 3798 | 1500 | 1800 |

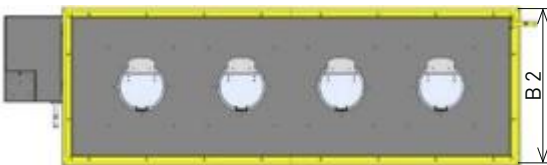
LU 300



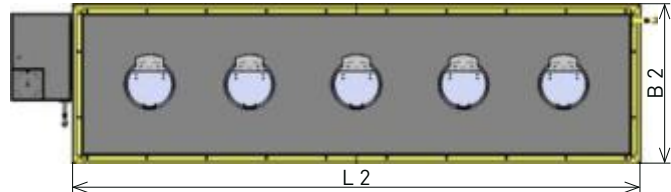
LU 400



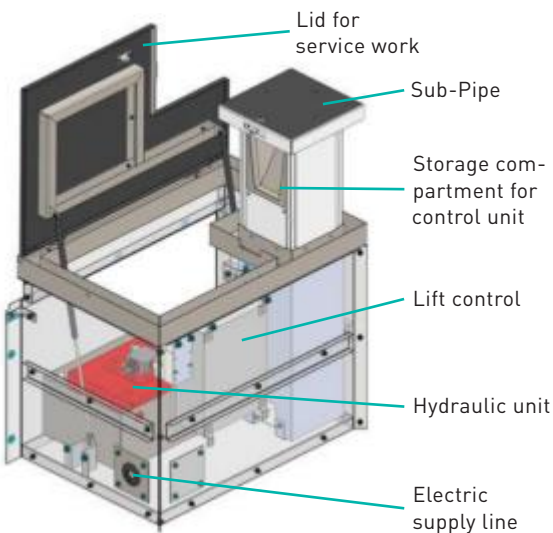
LU 500



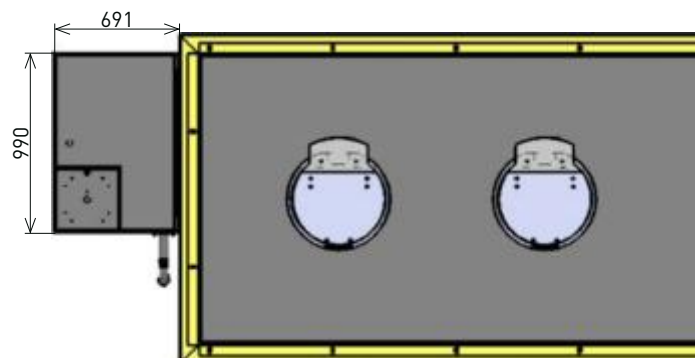
LU 600



Technician shaft with Sub-Pipe



Technician shaft, made of galvanised sheet steel





Accreditation SCESp 0046
Notified Body 1247
Akkreditierte Zertifizierungsstelle
nach ISO/IEC 17065:2012

Zertifizierungsstelle
SIBE Schweiz



Baumusterprüfbescheinigung

Original Bescheinigung in Deutsch

Nr. 1313 / 2

| | |
|------------------------------|------------------------------------------------------------------------------------------------------------------------------------------------------------------------------------------------------------------------------------------------------------------|
| Maschine | Abfallverdichter Abfallpresse |
| Marke | Quadromat Liftsystem |
| Typ | Varianten: QM / QM-E / QM-EK / QMK / QMK-E / QMK-K Baugrößen: 530-26 / 530-31 / 650-31 |
| Sicherheitsanforderungen | EN ISO 13849-1:2015 Sichere Bewegungen der Liftkonstruktion, der Plattform und des Deckels im Zusammenhang mit versenkbarem Unterflurpresscontainer sowie sichere Ausführung der Grubenlüftung im Sinne des Explosionsschutzes entsprechend der Kat. 3 / PL d |
| Herstelleradresse | Wolter Entwürfsysteme AG Pfinnlofstrasse 13 CH-5647 Oberrüti |
| Adresse des Bevollmächtigten | - |
| Ablaufdatum | 30. Juni 2026 |

**Model type
examination
certificate**

Das überprüfte Baumuster entspricht den einschlägigen Bestimmungen der Richtlinie 2006/42/EG vom 17. Mai 2006 über Maschinen. Diese Bescheinigung gilt zusammen mit den allenfalls vorstehend erwähnten Beilagen sowie den auf der Rückseite aufgeführten rechtlichen Bestimmungen.

Ausstellungsdatum
1. Juli 2021

T. Amrein
Sicherheitsingenieur

Zertifizierungsstelle SIBE Schweiz
NSBIV AG
Brünigstrasse 18
CH-6005 Luzern

R. Walker
Zertifizierungsstellenleiter

Concrete element

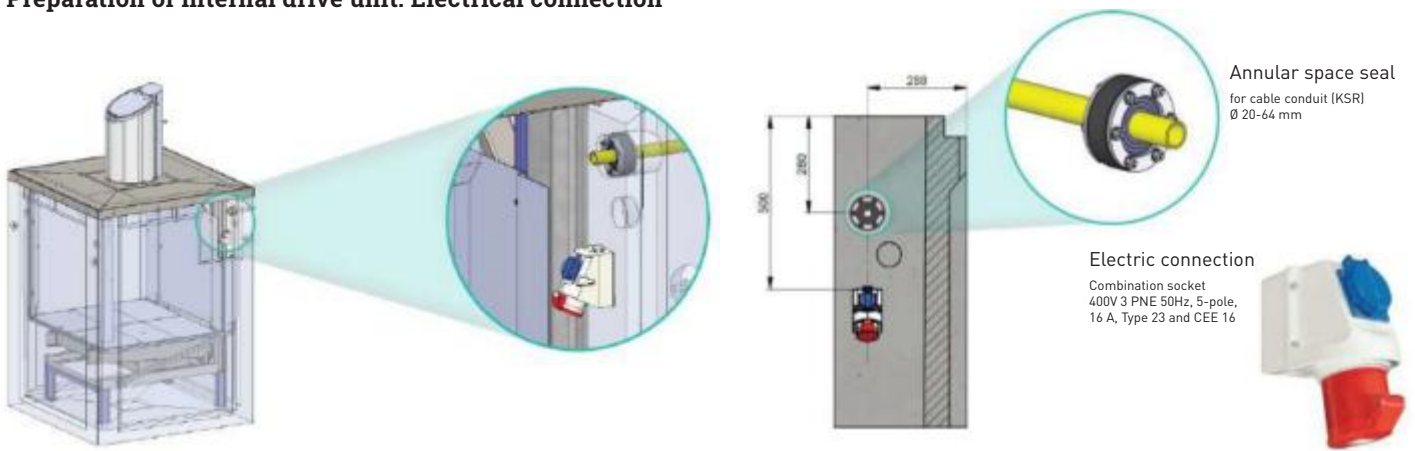
Prefabricated, manufactured concrete element with a wall thickness of 150 mm. Four ball-head anchors are attached to the side for loading and unloading the concrete element. In the case of a system with a slope, the concrete element is prepared on site at the factory to suit the situation.

Options:

- Exterior coating for increased waterproofing
- Interior coating for chemical resistance
- Buoyancy safety in case of elevated groundwater level
- Concrete element with sewer connection

Made in Switzerland.
Quality from Oberrüti since 1991.

Preparation of internal drive unit: Electrical connection



Concrete elements

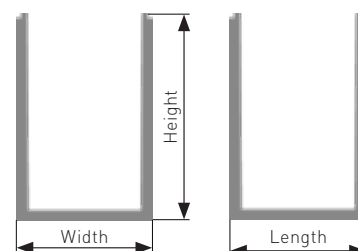
We not only build perfect lift systems, but also the concrete elements to go with them.



Dimensions of the concrete elements

| Model | Length | Width | Height | Weight |
|--------------|--------|-------|--------|--------|
| LU 150 B | 2210 | 1650 | 1950 | 6.0 t |
| LU 200 B | 2210 | 1950 | 1950 | 5.4 t |
| LU 200 C Eco | 2600 | 1950 | 1950 | 4.9 t |
| LU 300 | 2240 | 2900 | 1800 | 8.9 t |
| LU 400 | 2240 | 3900 | 1800 | 11.5 t |
| LU 500 | 2240 | 5300 | 1800 | 14.5 t |
| LU 600 | 2240 | 6350 | 1800 | 16.9 t |

Dimensions



Concr. element LU 200 C, Eco



Drive: Operation and hydraulics

To lift the lift out of the concrete element, it is controlled via a control bulb or operating column, depending on the product.

Internal drive unit:

If the system has an internal drive unit with hydraulic power unit and control unit, a control unit is located in the throw-in column or in the lift system's technician shaft.

External drive unit:

If the lift is driven by external hydraulics, for example those of the waste disposal vehicle, a hydraulic coupling is located in the throw-in column.

Light:

The Light version has a simple and sustainable drive option. The system is powered by a battery-operated drill, which enables it to be raised and lowered. This version is available for the LU 150 type.



Retractable control column "Sub-Pipe".



Fixed operating column with key switch



Electric operation with control unit in the rear of the throw-in column, incl. emergency hydraulic connection.



Can be installed in the customer's control cabinet.

Now even easier!



Lift system with battery-powered drill for raising and lowering the platform. The location of the lift system can be chosen flexibly, as no power supply is necessary. The lower concrete depth also results in cost savings for on-site preparations.

Lift system LU 150-L



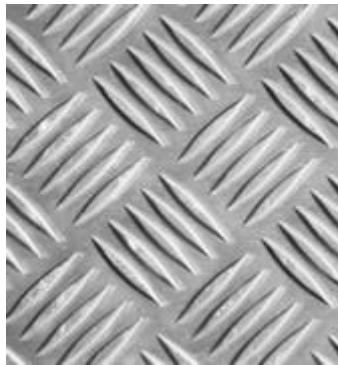
LU 150-L with Baléro column 120 for the removal of the container is raised.



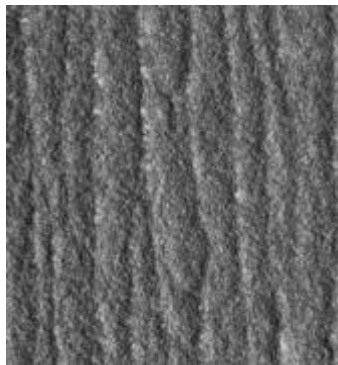
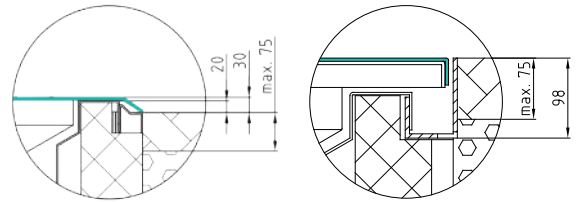
LU 150-L with one throw-in column type Lausanne.

Pavement platform

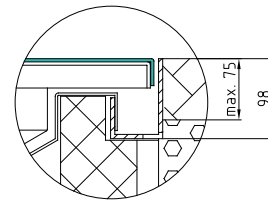
Overview of platform/base surfaces



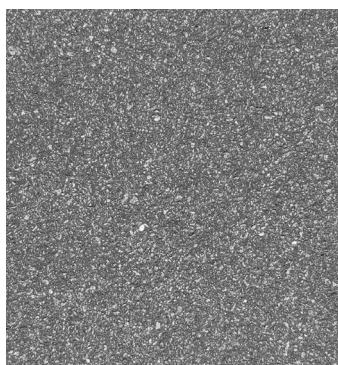
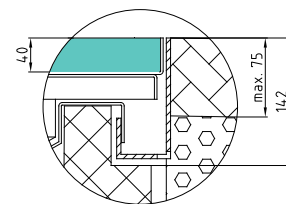
Aluminium bulb plate (5 / 7 mm)



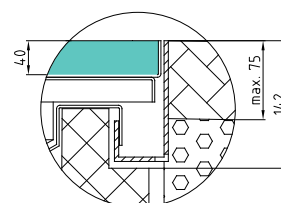
Hard covering (4 mm)



Stone coating (40 mm)



Mastic asphalt (40 mm)

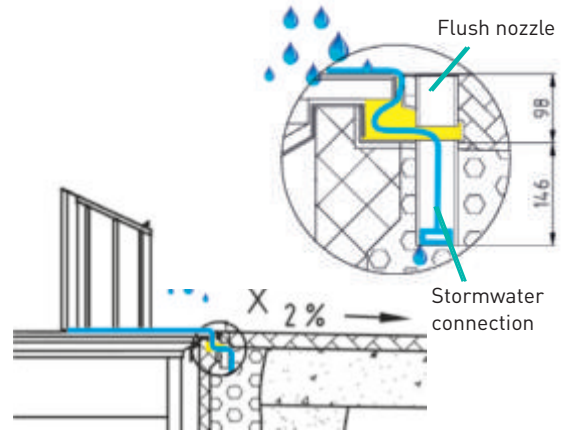


Closing frame

The closing frame separates the container platform and concrete element from the soil / road. All water on the platform runs into the closing frame. The frame is manufactured as a strong, galvanized steel structure and comes in 3 different stormwater drainage versions.

Sewer connection AS2

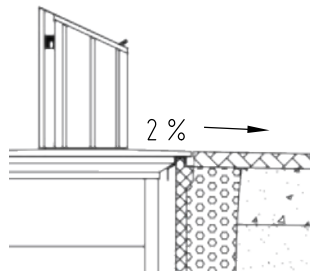
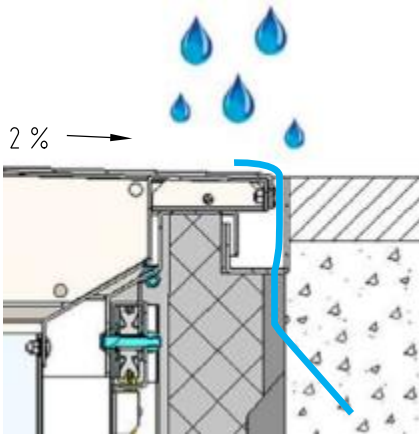
Closing frame with sewer connection can be screwed together with a flush nozzle frame.



Standard seepage water drainage

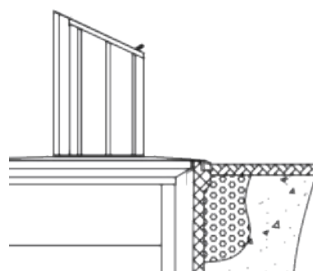
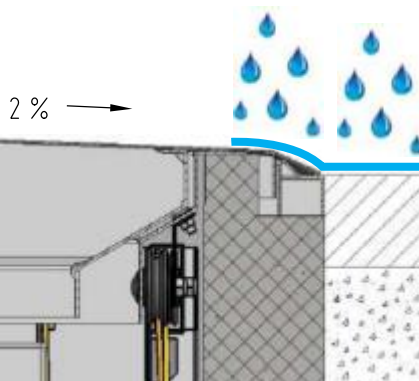
Closing frame with 12 recesses at the bottom allowing storm water to flow into the gravel base.

Frames can be screwed together.



"Village" surface drainage

All storm water on the platform flows off the surface onto the road.



One System, various Possibilities

Features:

- Use of large refuse containers from 660 l to 1100 l, flat lid.
- Disposal by traditional refuse collection vehicles
- Lift system can be adapted to the surroundings (inclination).
- Types of deposit columns:
Typ Baléro, Vilaro, Caslano
- Different fractions can be disposed of per system
- tailor-made solutions



Option: We can also mount the Lift-o-Mat with a slope and thus integrate it perfectly into the surroundings.



Underground for textile collection

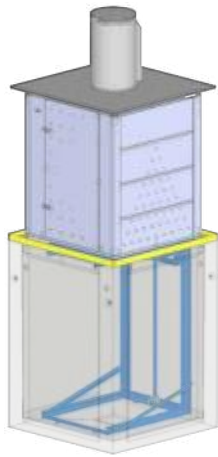
In densely populated cities and communities, space-saving underground containers are increasingly being installed. A solution from the LU 200 series was developed from our proven Liftomat range to meet the requirements of contemporary textile collection.



LU 200 (3 m³)
with textile cabinet



LU 200 (4.8 m³):
with XL textile cabinet



Hydraulic connection to external vehicles



Caslano throw-in column with bottom flap



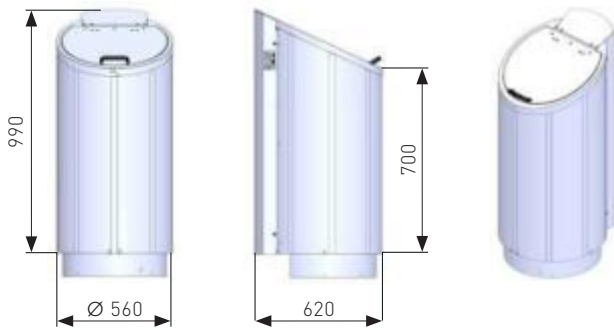
Caslano with integrated ventilation



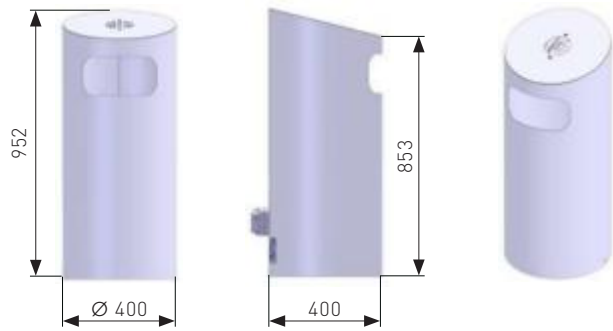
Liftomat LU 200 XL textile, during emptying

Throw-in columns

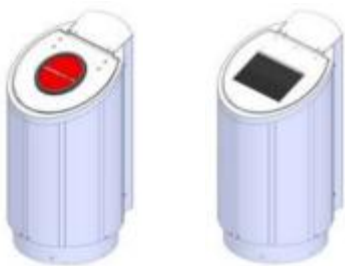
Baléro 120



Lausanne



Top throw-in



Glass
Throw-in Ø 200 mm with plastic ring and brush, noise protection package with guide tube

Cardboard
Throw-in with brush, 200 × 320 mm

Throw-in panels



Glass
Throw-in panel Ø 200 mm with plastic ring and brush, noise protection package



Paper
Throw-in panel, rectangular 120 × 320 mm

Direct throw-in



Organic waste
Funnel Ø 250 mm, stainless steel internal wall, conical with plastic tube



Residual waste
Ø 500 mm / 550 mm



Marking options

Adhesive film



Printed (screen printing)



Reference projects





Lift systems

Lift maintenance and function check



Service is much more than just troubleshooting.
It is care and protection of systems that have to deliver top performance for many years.

Regular maintenance offers these advantages:

- Consistent quality and value of the system
- Extended service life
- Increased availability
- Reduction in costs
- User safety

Services

- Maintenance and inspection
- Cleaning of the complete system
- Lubricating and greasing the components
- All oil checks included
- Compactor container maintenance



The impressive Quadromat system from Villiger in operation.

Your team of experts

Our experts ensure maximum running performance. They know the challenges of maintenance and ensure that legal requirements and technical standards are met.



Automatic washing of an underground container in the mobile cleaning system.



Our systems enable comfortable operation.

Proven functionality paired with a high level of comfort

The Villiger systems all feature convenient operation. Our versatile and easy-to-use automatic functions make your work immensely easier. This saves you time and allows you to concentrate on other things.

Ask for a non-binding offer!

Let us or your Villiger sales partner advise you!





Customer Service



Speed – on-site at any time

A service team and direct contact person guarantee our permanent availability, whether sales or technical advice. If you need us, we are fast and reliable. If required, our Villiger sales partners are also always available to provide a responsive, optimal solution.



Villiger-Remote Diagnostics Service

No downtime allowed

A number of Villiger products come with high built-in intelligence. The Speed-Waste-Lifter, lift system, electronic access and weighing system must all operate flawlessly without downtime. We ensure this via mobile radio and internet technology, which transfer data from the existing installation directly to the technician's computer. They can then make the correct diagnosis and take corrective actions from any location. You in turn save time and money!



Continuous documentation

We think in solutions

All business brochures, the website and our presence in social media are regularly updated - this enables us to always provide our customers with the latest information about our products, services and developments.

The technical documentation for spare parts and operating instructions for the product range are also available and up-to-date.



Spare parts

Reliability lies in the detail

Our range includes all spare parts you need. Maintenance and wear/consumable parts are always in stock. Guaranteed delivery for more than 25 years. We deliver service with manufacturer competence.



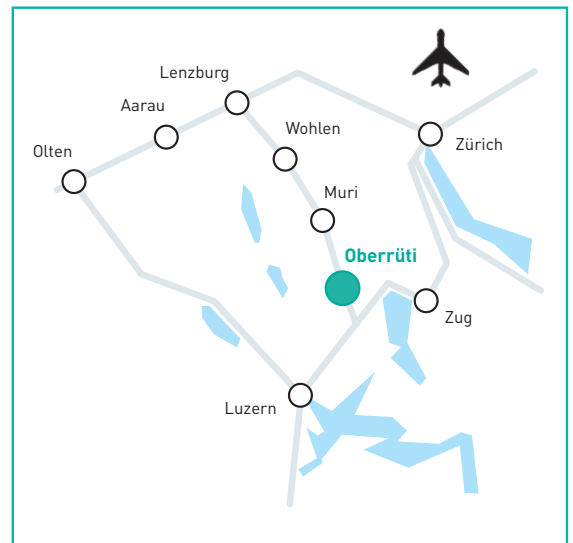
Why Villiger?

Because we offer waste management systems with a customer perspective in mind. Villiger develops and produces optimal systems, not only for our customers but alongside them. For us, every order is a personal matter.

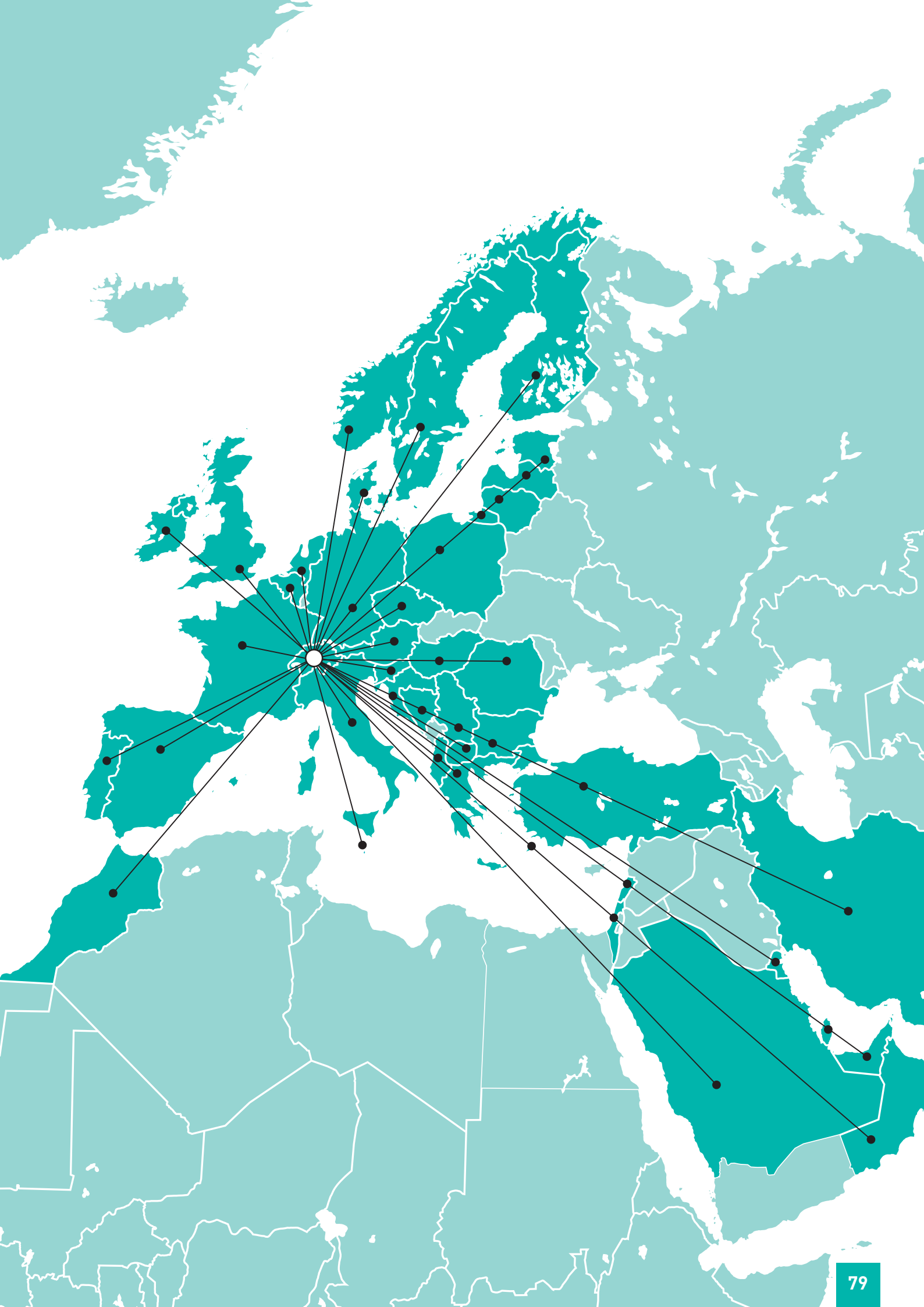
Because, via our comprehensive service and with Swiss values, we are advancing the waste management industry. Villiger stands for reliability, flexibility and a great innovative power.

Because we pride ourselves on a commitment to support the youth. After all, a well educated and trained youth is our future! For many years now, classes of trainees have been an important part of our company. To enhance their learning, we strive to make Villiger an interesting, challenging and supportive employer. We truly believe in motivating the next generation to be top performers.

Because we have a large network of experienced and competent distribution partner, which are present in many different countries. This creates a win-win situation for everyone involved.



- ISO 9001:2015 Quality Management System**
- ISO 14001:2015 Environmental Management System**
- ISO 45001:2018 Occupational Health and Safety Management System**





Headquarter



Villiger Entsorgungssysteme AG

Bahnhofstrasse 13
CH-5647 Oberrüti
Tel.: +41 41 784 23 23
info@villiger.com



Villiger Entsorgungssysteme GmbH

Adolf-Kolping-Str. 1/1
DE-88433 Schemmerberg
Tel.: +49 7356 86 431 0
info.de@villiger.com



Villiger Austria GmbH

Himmelreich 1
A-5020 Salzburg
Tel.: +43 664 44 20 533
erich.temmel@villiger.com



Villiger Tecnologie Ambientali

Vicolo della Parrocchia 3
I-39100 Bolzano
Tel.: +39 348 288 90 40
michele.stevan@villiger.com

Sales partner:

villiger.com